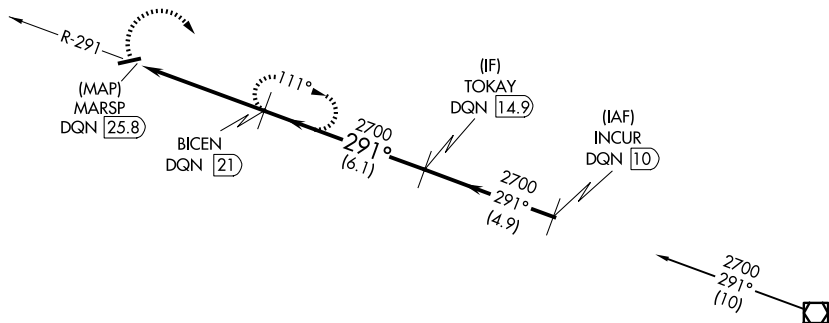
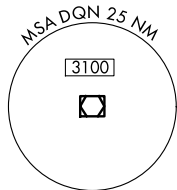


VOR/DME DQN <b>114.5</b> Chan <b>92</b>	APP CRS <b>291°</b>	Rwy Ldg TDZE Apt Elev <b>1123</b>	<b>N/A</b> <b>N/A</b> <b>1123</b>
---	------------------------	--------------------------------------	---

**VOR-A**  
RANDOLPH COUNTY (I22)

DME required.	MISSED APPROACH: Climbing right turn to 2700 on DQN VOR/DME R-291 to BICEN/21 DME and hold.
▼ ▲ NA	

VES AWOS-3PT <b>125.9</b>	COLUMBUS APP CON <b>134.45 352.05</b>	UNICOM <b>123.0</b> (CTAF) <b>1</b>
------------------------------	--	--

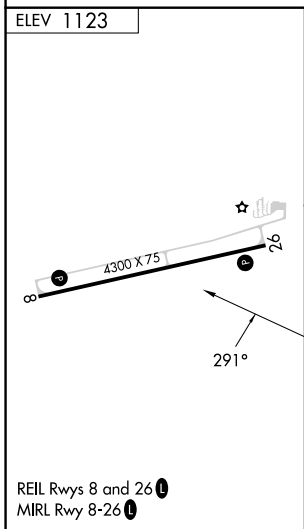


EC-2, 14 MAY 2026 to 11 JUN 2026

EC-2, 14 MAY 2026 to 11 JUN 2026

ELEV 1123

Procedure NA for arrival on DQN VOR/DME airway radials 234 CW 329.



	2700 DQN R-291	BICEN DQN 21	BICEN DQN 21	TOKAY DQN 14.9
	MARSP DQN 25.8	2700		291°
	4.8 NM		6.1 NM	
CATEGORY	A	B	C	D
CIRCLING	1700-1	577 (600-1)	1820-2 697 (700-2)	NA