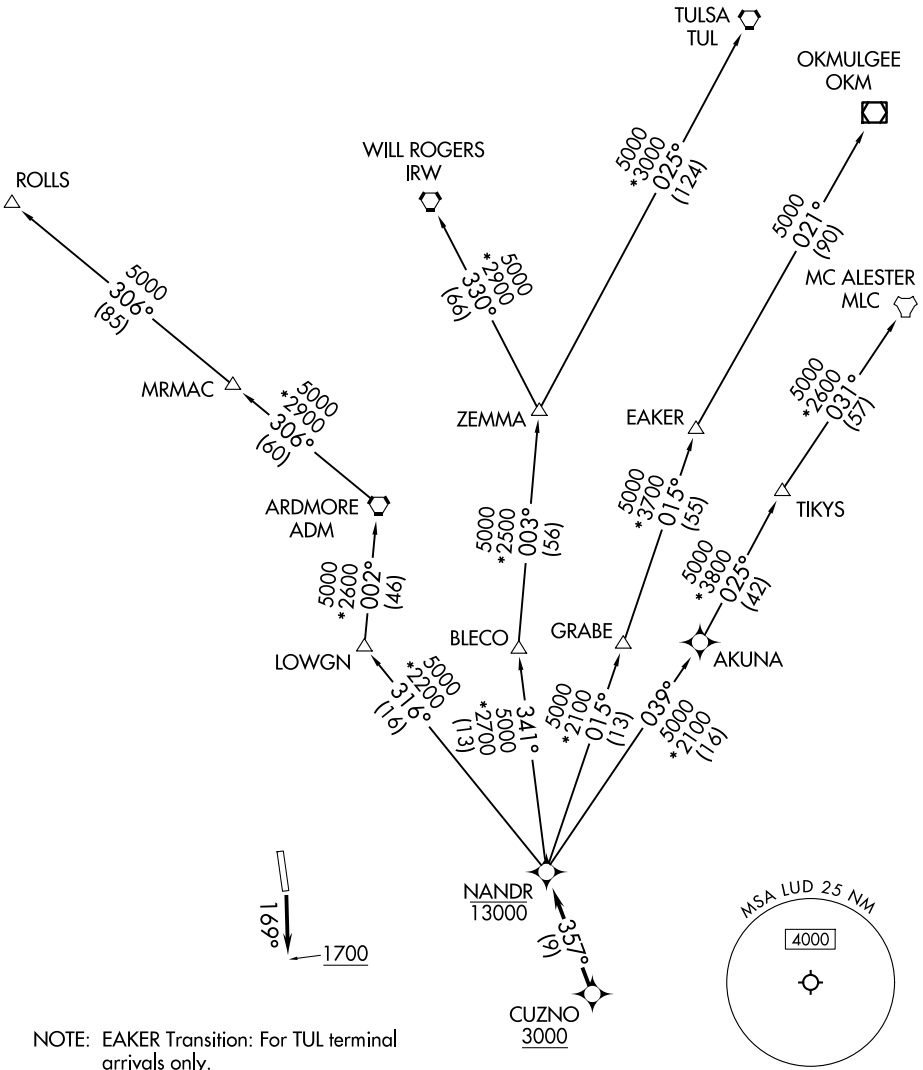


NANDR FOUR DEPARTURE (RNAV)

LONE STAR DEP CON
118.1 306.95
CTAF
122.8

RNAV 1 - DME/DME/IRU or GPS required.
RADAR required.

**TOP ALTITUDE:
ASSIGNED BY ATC**



SC-2, 14 MAY 2026 to 11 JUN 2026

SC-2, 14 MAY 2026 to 11 JUN 2026

NOTE: EAKER Transition: For TUL terminal arrivals only.

NOTE: TULSA Transition: For all aircraft overflying TUL VORTAC.

NOTE: Aircraft arriving to the Oklahoma City terminal area, file and expect the ZEMMA enroute transition.

TAKEOFF MINIMUMS
 Rwy 17: 300-1¼ or standard with minimum climb of 248'/NM to 2500.
 Rwy 35: Standard with minimum climb of 320'/NM to 3500.

NOTE: Chart not to scale.

(CONTINUED ON FOLLOWING PAGE)

NANDR FOUR DEPARTURE (RNAV)

NANDR FOUR DEPARTURE (RNAV)



DEPARTURE ROUTE DESCRIPTION

TAKEOFF RUNWAY 17: Climb on heading 169° to 1700 before proceeding north, thence. . .

. . .expect RADAR vectors to cross CUZNO at or above 3000, then on track 357° to cross NANDR at or below 13000, then on assigned transition. Maintain ATC assigned altitude, expect filed altitude 10 minutes after departure.

- EAKER TRANSITION (NANDR4.EAKER)
- MC ALESTER TRANSITION (NANDR4.MLC)
- OKMULGEE TRANSITION (NANDR4.OKM)
- ROLLS TRANSITION (NANDR4.ROLLS)
- TULSA TRANSITION (NANDR4.TUL)
- WILL ROGERS TRANSITION (NANDR4.IRW)
- ZEMMA TRANSITION (NANDR4.ZEMMA)

SC-2, 14 MAY 2026 to 11 JUN 2026

SC-2, 14 MAY 2026 to 11 JUN 2026