

WAAS CH 40107 W17A	APP CRS 169°	Rwy Idg 4200 TDZE 1047 Apt Elev 1047
--	------------------------	---

RNAV (GPS) RWY 17

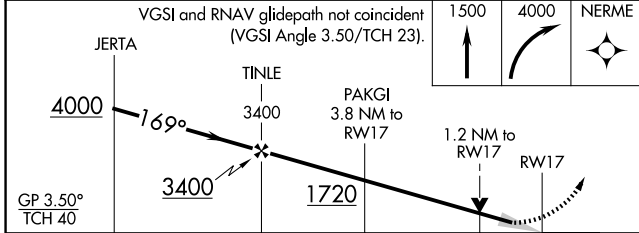
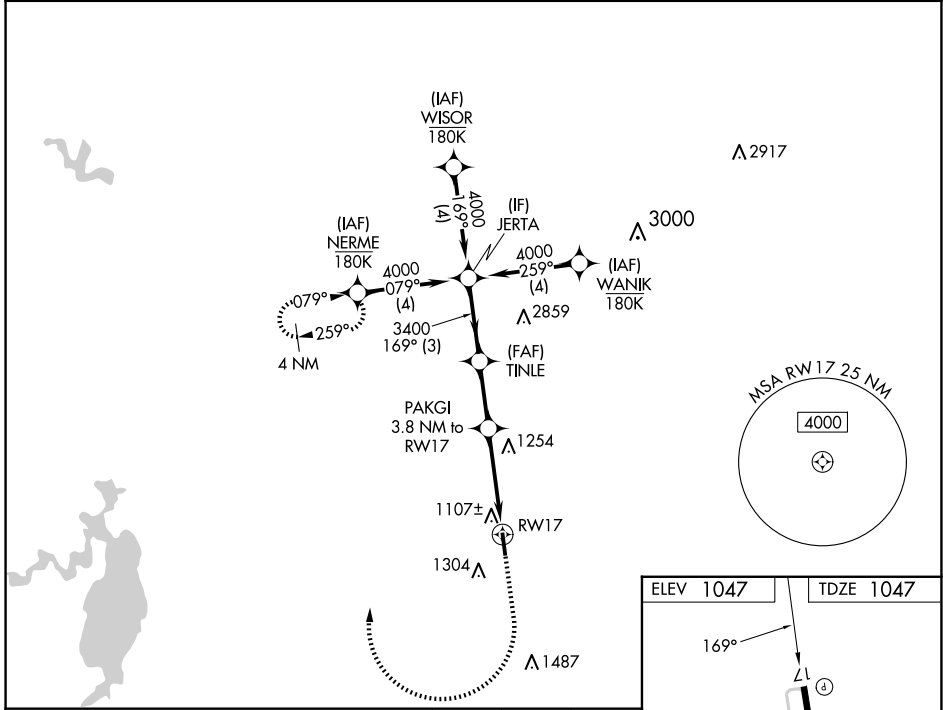
DECATUR MUNI (LUD)

RNP APCH - GPS.

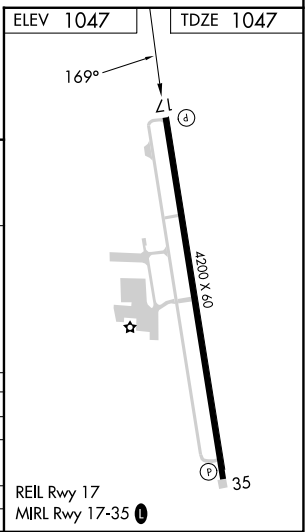
⚠ For uncompensated Baro-VNAV systems, LNAV/VNAV NA below -17°C or above 54°C. Baro-VNAV and VDP NA when using FTW altimeter setting. When local altimeter setting not received, use FTW altimeter setting and increase LPV DA to 1408 feet; increase LNAV/VNAV DA to 1466 feet and all visibilities ½ SM; increase all MDAs 120 feet.

MISSED APPROACH: Climb to 1500 then climbing right turn to 4000 direct NERME and hold, continue climb-in-hold.

AWOS-3 118.225	LONE STAR APP CON 118.1 306.95	UNICOM 122.8(CTAF) 0
--------------------------	--	--------------------------------



CATEGORY	A	B	C	D
LPV DA	1297-1	250 (300-1)		NA
LNAV/VNAV DA	1355-1	308 (400-1)		NA
LNAV MDA	1500-1	453 (500-1)		NA
C CIRCLING	1600-1	553 (600-1)		NA



SC-2, 14 MAY 2026 to 11 JUN 2026

SC-2, 14 MAY 2026 to 11 JUN 2026