

WAAS CH 53447 W35A	APP CRS 349°	Rwy Idg TDZE Apt Elev	4200 1047 1047
--	------------------------	-----------------------------	---

RNAV (GPS) RWY 35

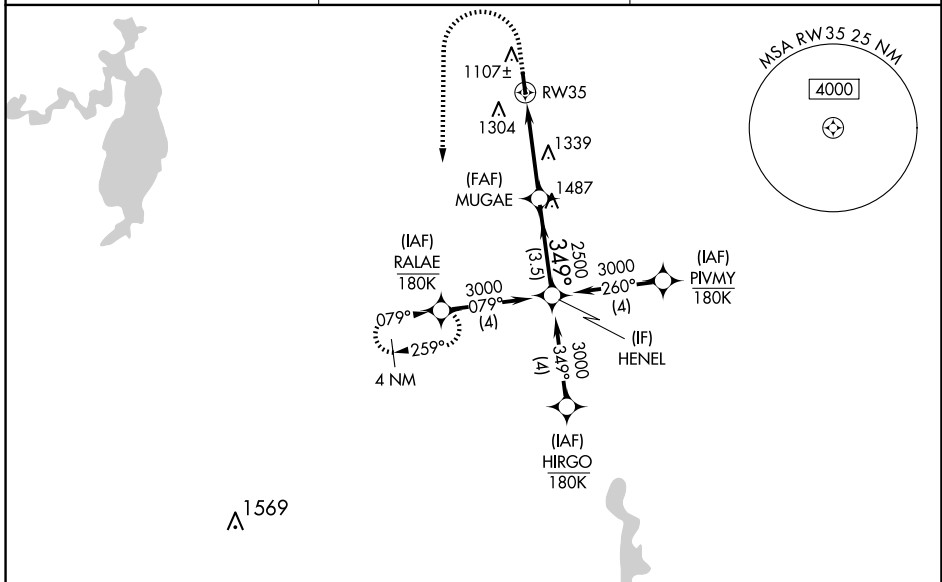
DECATUR MUNI (LUD)

RNP APCH - GPS.

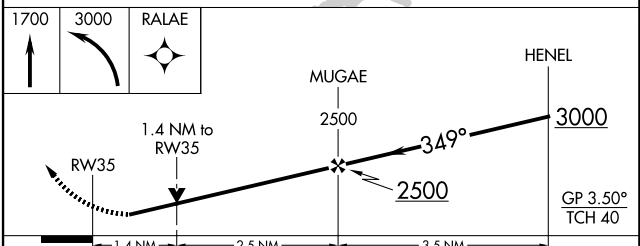
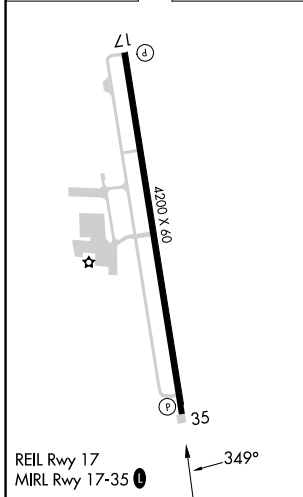
⚠ Rwy 35 helicopter visibility reduction below $\frac{3}{4}$ SM NA. Baro-VNAV and VDP NA when using FTW altimeter setting. For uncompensated Baro-VNAV systems, LNAV/VNAV NA below -17°C or above 54°C. When local altimeter setting not received, use FTW altimeter setting and increase LPV DA to 1408 feet; increase LNAV/VNAV DA to 1661 feet and all visibilities $\frac{3}{8}$ SM; increase all MDAs 120 feet.

MISSED APPROACH:
Climb to 1700 then climbing left turn to 3000 direct RALAE and hold.

AWOS-3 118.225	LONE STAR APP CON 118.1 306.95	UNICOM 122.8(CTAF)
--------------------------	--	------------------------------



ELEV 1047	TDZE 1047
------------------	------------------



CATEGORY		A	B	C	D
LPV	DA	1297-1	250 (300-1)		NA
LNAV/VNAV	DA	1550-1 $\frac{3}{8}$	503 (600-1 $\frac{3}{8}$)		NA
LNAV	MDA	1600-1	553 (600-1)		NA
C	CIRCLING	1600-1	553 (600-1)		NA

SC-2, 14 MAY 2026 to 11 JUN 2026

SC-2, 14 MAY 2026 to 11 JUN 2026