

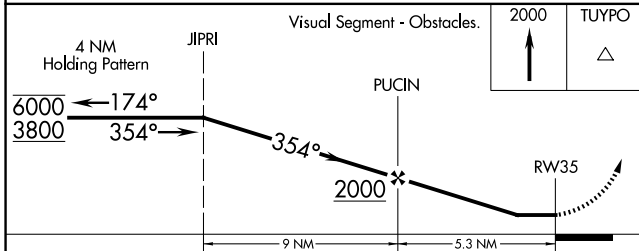
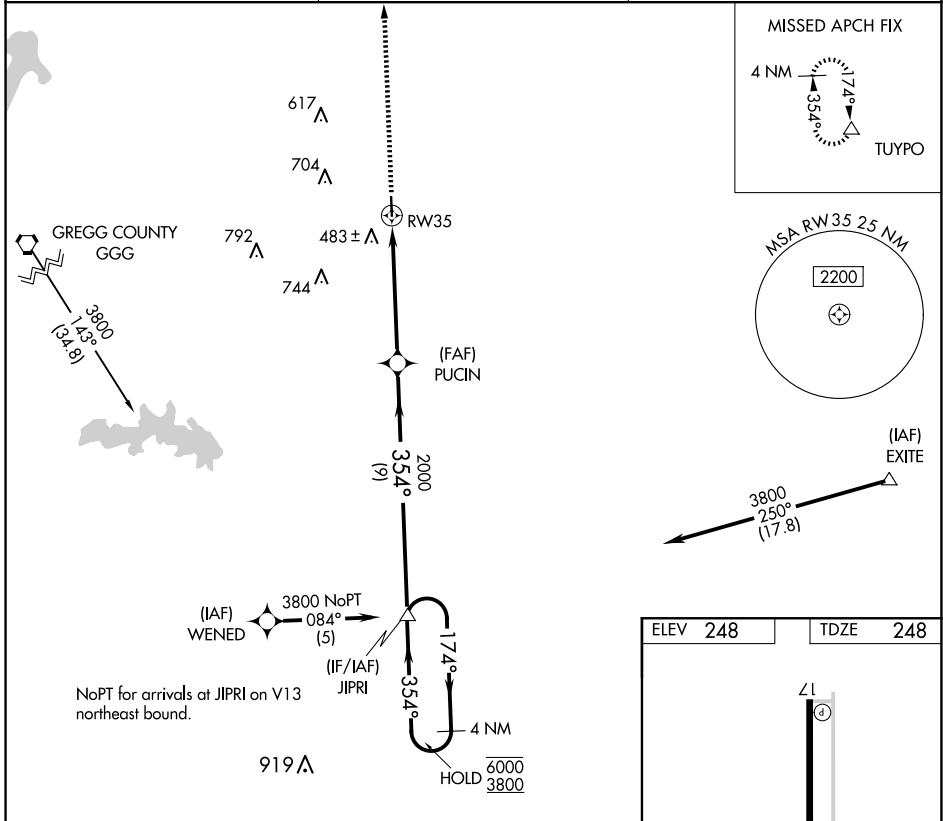
APP CRS	Rwy Ldg	<b>4000</b>
<b>354°</b>	TDZE	<b>248</b>
	Apt Elev	<b>248</b>

# RNAV (GPS) RWY 35

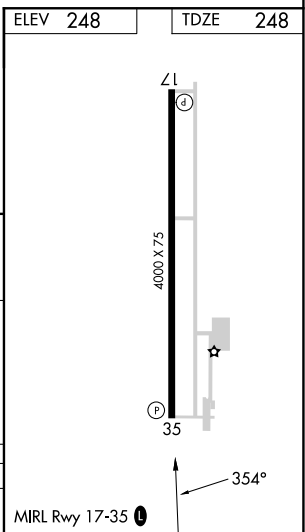
PANOLA COUNTY-SHARPE FLD (4F2)

RNP APCH-GPS.	MISSED APPROACH: Climb to 2000 direct TUYPO and hold.
<p><b>⚠</b> Rwy 35 helicopter visibility reduction below 3/4 SM NA. When local altimeter setting not received, use GGG altimeter setting.</p>	

AWOS-3PT <b>121.125</b>	SHREVEPORT APP CON * <b>119.9 335.55</b>	UNICOM <b>122.8 (CTAF) 0</b>
----------------------------	---	---------------------------------



CATEGORY	A	B	C	D
LNAV MDA	840-1	592 (600-1)	840-1 3/4 592 (600-1 3/4)	NA



SC-2, 14 MAY 2026 to 11 JUN 2026

SC-2, 14 MAY 2026 to 11 JUN 2026