

WAAS CH <b>42942</b> <b>W32A</b>	APP CRS <b>314°</b>	Rwy Ldg TDZE <b>987</b> Apt Elev <b>987</b>	<b>4600</b> <b>987</b> <b>987</b>
--	------------------------	---	---

# RNAV (GPS) RWY 32

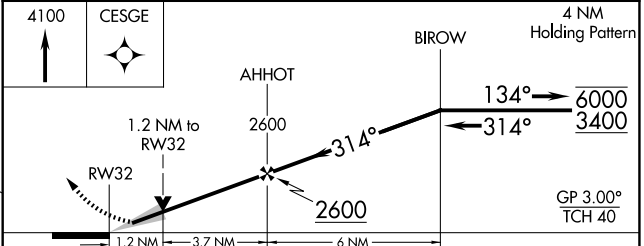
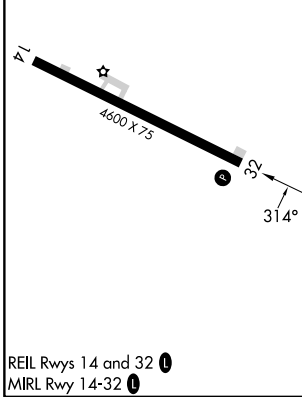
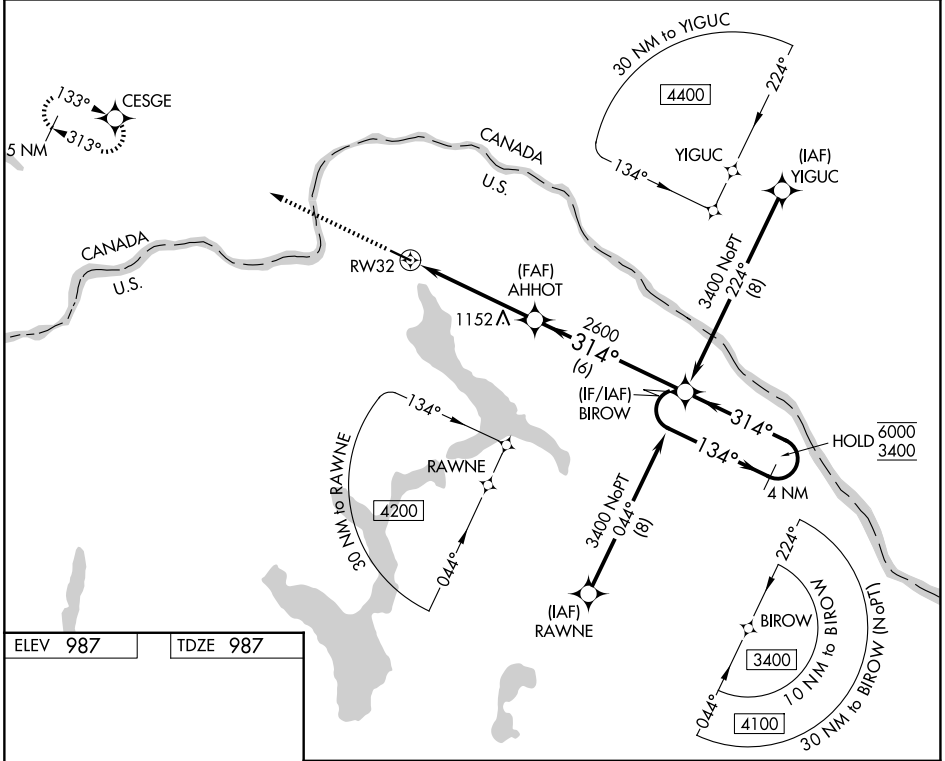
NORTHERN AROOSTOOK RGNL (FVE)

RNP APCH - GPS.

**V** VDP NA when using CAR altimeter setting. When local altimeter setting not received, use CAR altimeter setting and increase LPV to 1303 feet; increase all MDAs 120 feet and LNAV visibility Cat C and D 3/8 SM; increase Circling visibility Cat B and D 1/4 SM and Cat C 1/2 SM.

**MISSED APPROACH:** Climb to 4100 direct CESGE and hold, continue climb-in-hold to 4100.

ASOS <b>135.725</b>	BOSTON CENTER <b>124.75 239.05</b>	UNICOM <b>122.7 (CTAF)</b>
------------------------	---------------------------------------	-------------------------------



CATEGORY	A	B	C	D
LPV DA	1187-1		200 (200-1)	
LNAV MDA	1420-1	433 (500-1)	1420-1 1/4	433 (500-1 1/4)
CIRCLING	1560-1 573 (600-1)	1700-1 713 (800-1)	1840-2 1/2 853 (900-2 1/2)	1840-2 3/4 853 (900-2 3/4)

FRENCHVILLE, MAINE  
Amdt 2B 14MAY26

47°17'N-68°19'W

# RNAV (GPS) RWY 32

NORTHERN AROOSTOOK RGNL (FVE)

NE-1, 14 MAY 2026 to 11 JUN 2026

NE-1, 14 MAY 2026 to 11 JUN 2026