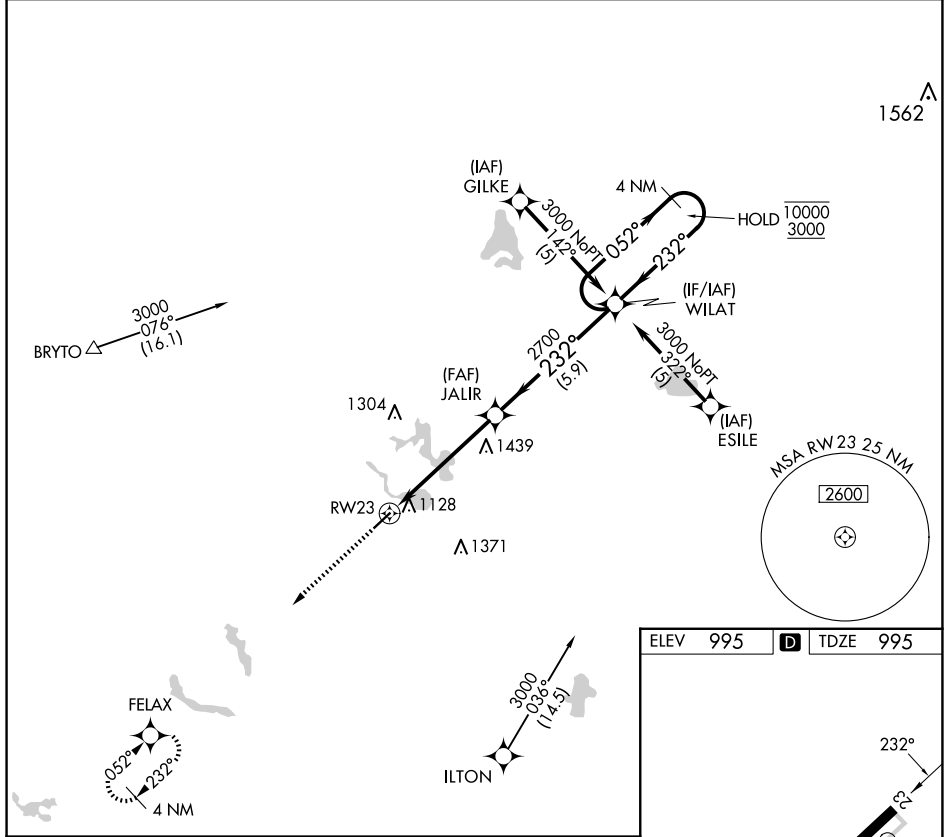


APP CRS	Rwy Idg	<b>4000</b>
<b>232°</b>	TDZE	<b>995</b>
	Apt Elev	<b>995</b>

# RNAV (GPS) RWY 23

TRI-STATE STEUBEN COUNTY (A.N.Q)

RNP APCH.		MISSED APPROACH: Climb to 3000 direct FELAX and hold.
<p><b>▼</b> Rwy 23 helicopter visibility reduction below 1 SM NA. Procedure NA at night.</p>		
AWOS-3 <b>118.175</b>	FORT WAYNE APP CON <b>127.2 284.6</b> (SW/NW) <b>132.15 284.6</b> (SE/NE)	UNICOM <b>123.075</b> (CTAF) <b>①</b>



EC-2, 14 MAY 2026 to 11 JUN 2026

EC-2, 14 MAY 2026 to 11 JUN 2026

ELEV	995	<b>D</b>	TDZE	995
------	-----	----------	------	-----

3000	FELAX	Visual Segment - Obstacles.	4 NM
↑	✧		Holding Pattern

CATEGORY	A	B	C	D
LNAV MDA	1700-1	705 (800-1)	1700-2	NA
			705 (800-2)	