

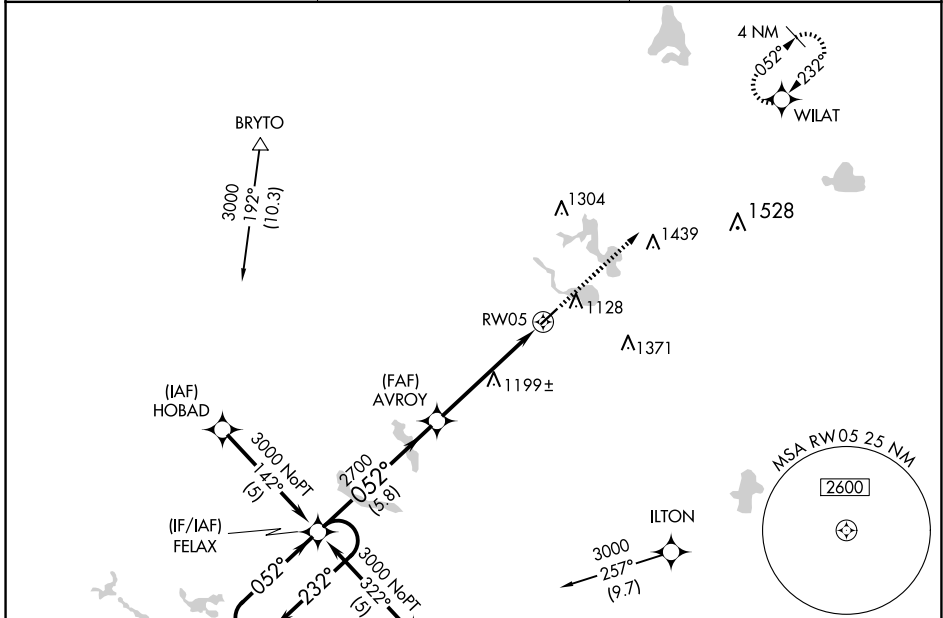
APP CRS	Rwy Idg	<b>4000</b>
<b>052°</b>	TDZE	<b>990</b>
	Apt Elev	<b>995</b>

# RNAV (GPS) RWY 5

TRI-STATE STEUBEN COUNTY (ANQ)

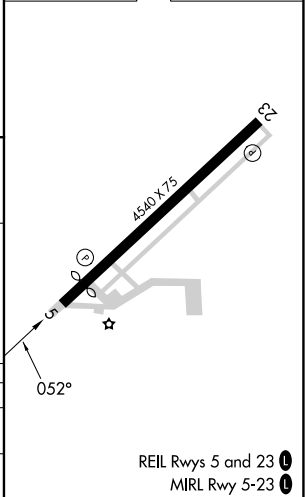
RNP APCH.	<p>▼ For uncompensated Baro-VNAV systems, LNAV/VNAV NA below -16°C or above 54°C.</p> <p>▲ NA Rwy 5 helicopter visibility reduction below ¾ SM NA.</p>	<p>MISSED APPROACH: Climb to 3000 direct WILAT and hold.</p>
-----------	--	--

<p>AWOS-3 <b>118.175</b></p>	<p>FORT WAYNE APP CON <b>127.2 284.6</b> (SW/NW) <b>132.15 284.6</b> (SE/NE)</p>	<p>UNICOM <b>123.075</b> (CTAF) <b>1</b></p>
----------------------------------	--	--



ELEV 995	<b>D</b> TDZE 990
----------	-------------------

<p>4 NM Holding Pattern</p> <p>3000 ← 232°</p> <p>→ 052°</p> <p>GP 3.00° TCH 40</p>	<p>FELAX</p> <p>AVROY</p> <p>2700</p> <p>*1.4 NM to RW05</p> <p>*LNAV only</p>	<p>3000</p> <p>WILAT</p>		
	<p>5.8 NM</p> <p>3.8 NM</p> <p>1.4</p>			
CATEGORY	A	B	C	D
LNAV/VNAV DA	1474-1¾		484 (500-1¾)	NA
LNAV MDA	1460-1	470 (500-1)	1460-1½	470 (500-1½)



EC-2, 14 MAY 2026 to 11 JUN 2026

EC-2, 14 MAY 2026 to 11 JUN 2026