

WAAS CH 58133 W17A	APP CRS 177°	Rwy Ldg 4020 TDZE 1176 Apt Elev 1176
--	------------------------	---

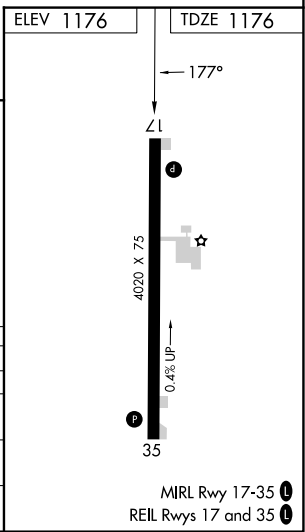
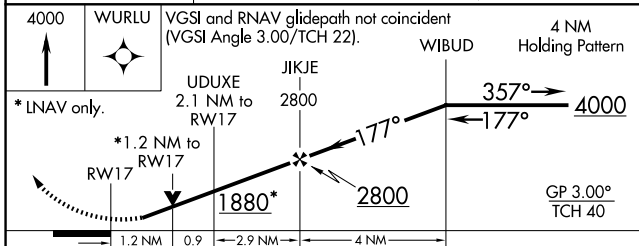
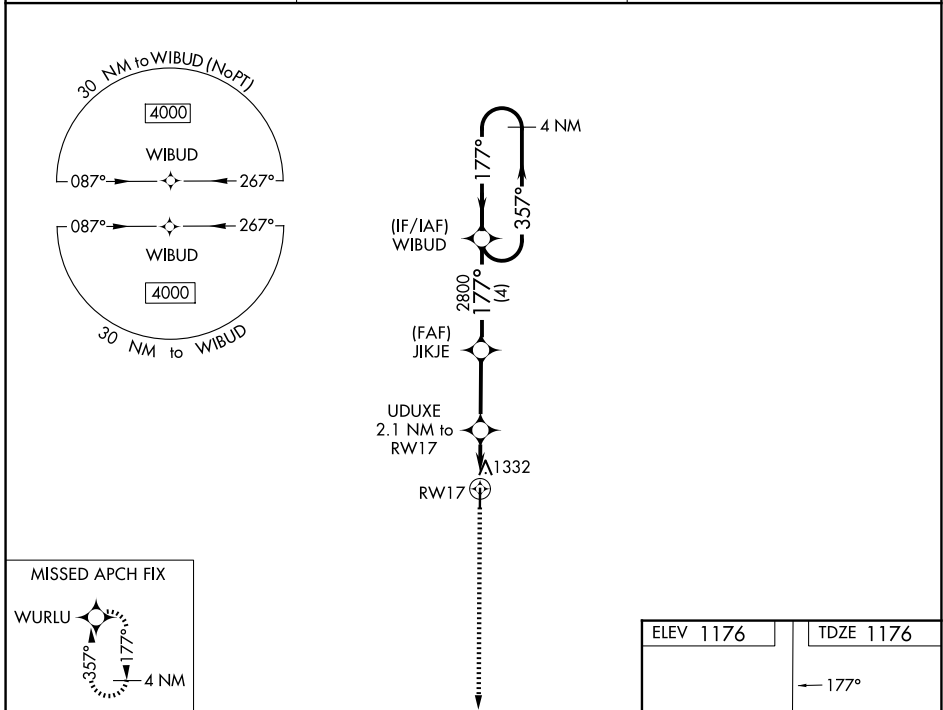
RNAV (GPS) RWY 17

HAMPTON MUNI (HPT)

▽ VDP and Baro-VNAV NA when using Mason City altimeter setting. For uncompensated Baro-VNAV systems, LNAV/VNAV NA below -17°C (2°F) or above 54°C (130°F).
▲ NA DME/DME RNP-0.3 NA. Helicopter visibility reduction below ¼ SM NA. When local altimeter setting not received, use Mason City altimeter setting and increase all DA 67 feet and all MDA 80 feet, and LNAV/VNAV all Cats visibility ¼ mile.

MISSED APPROACH: Climb to 4000 direct WURLU and hold, continue climb-in-hold to 4000.

AWOS-3 121.025	MINNEAPOLIS CENTER 134.0 288.3	UNICOM 122.7 (CTAF) 0
--------------------------	--	---------------------------------



CATEGORY	A	B	C	D
LPV DA	1426-1	250 (300-1)		NA
LNAV/VNAV DA	1605-1½	429 (500-1½)		NA
LNAV MDA	1600-1	424 (500-1)		NA
CIRCLING	1640-1	464 (500-1)		NA

NC-3, 14 MAY 2026 to 11 JUN 2026

NC-3, 14 MAY 2026 to 11 JUN 2026

MIRL Rwy 17-35 0
REIL Rwy 17 and 35 0