

WAAS CH 77833 W35A	APP CRS 357°	Rwy Ldg 4020 TDZE 1168 Apt Elev 1176
--	------------------------	---

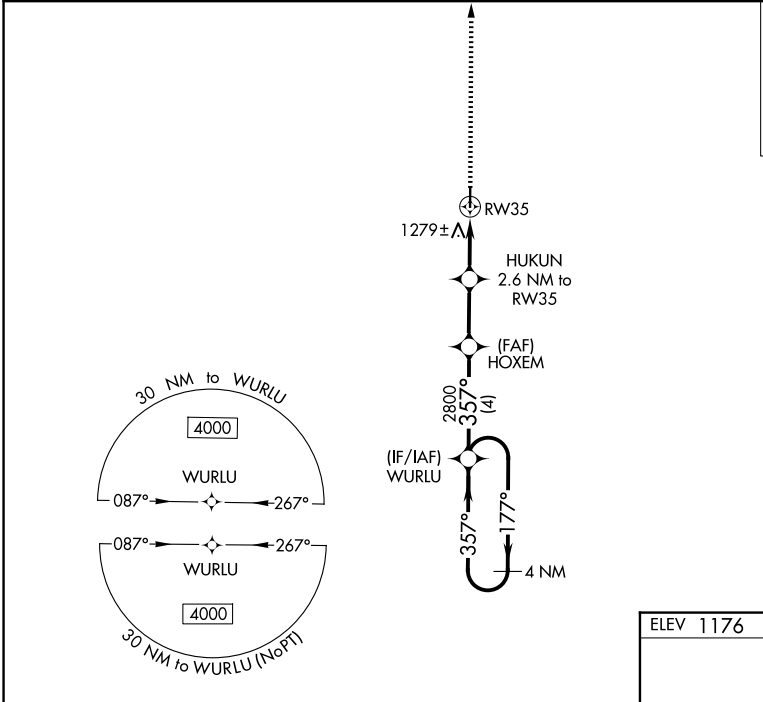
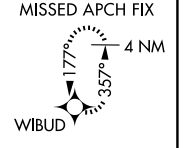
RNAV (GPS) RWY 35

HAMPTON MUNI (HPT)

▽ VDP and Baro-VNAV NA when using Mason City altimeter setting. For uncompensated Baro-VNAV systems, LNAV/VNAV NA below -17°C (2°F) or above 54°C (130°F).
△ NA DME/DME RNP-0.3 NA. Helicopter visibility reduction below 3/4 SM NA. When local altimeter setting not received, use Mason City altimeter setting and increase all DA 67 feet and all MDA 80 feet, and LNAV/VNAV all Cats visibility 1/4 mile.

MISSED APPROACH:
Climb to 4000 direct WIBUD and hold, continue climb-in-hold to 4000.

AWOS-3 121.025	MINNEAPOLIS CENTER 134.0 288.3	UNICOM 122.7 (CTAF)
--------------------------	--	-------------------------------

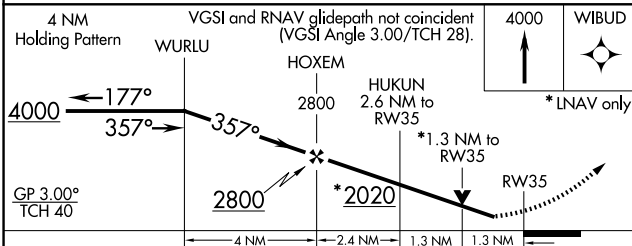


NC-3, 14 MAY 2026 to 11 JUN 2026

NC-3, 14 MAY 2026 to 11 JUN 2026

ELEV 1176	TDZE 1168
-----------	-----------

MIRL Rwy 17-35 **Ⓛ**
 REIL Rws 17 and 35 **Ⓛ**



CATEGORY	A	B	C	D
LPV DA	1418-1	250 (300-1)		NA
LNAV/VNAV DA	1654-1 5/8	486 (500-1 5/8)		NA
LNAV MDA	1620-1	452 (500-1)		NA
CIRCLING	1640-1	464 (500-1)		NA