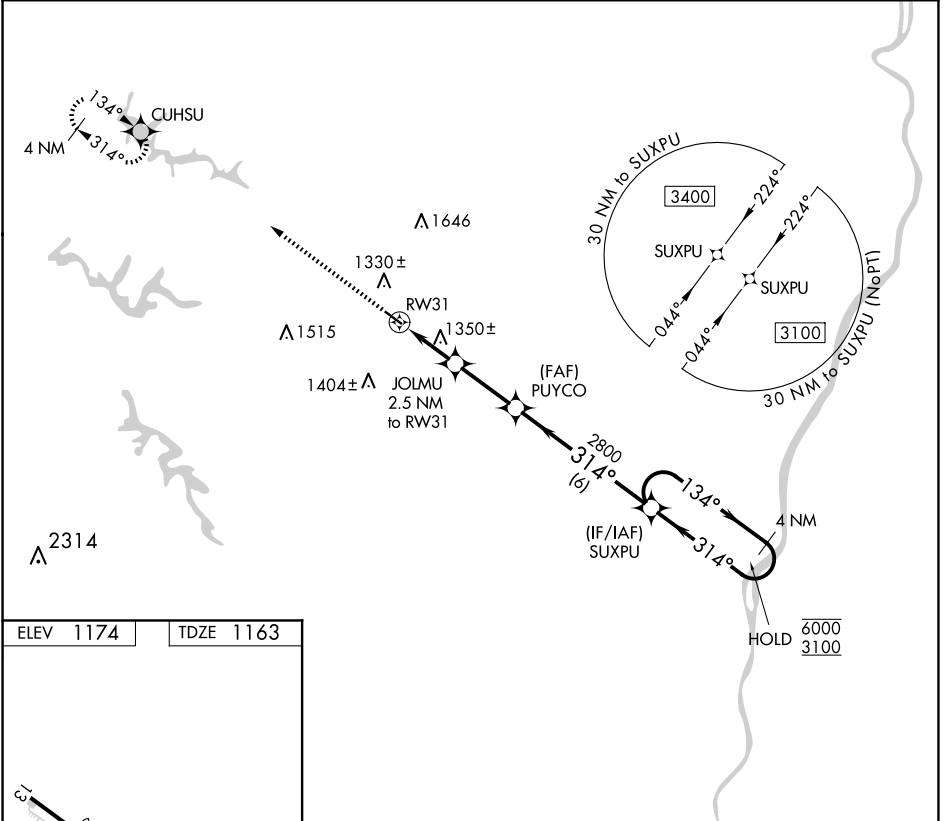


APP CRS	Rwy Idg	3744
314°	TDZE	1163
	Apt Elev	1174

RNAV (GPS) RWY 31

HARRISON COUNTY (8G6)

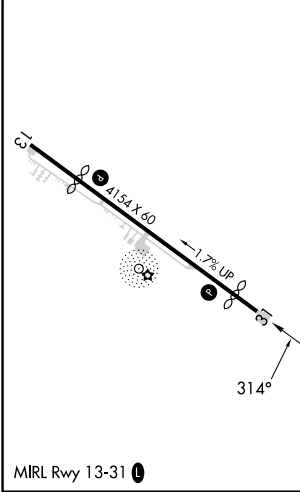
RNP APCH.		MISSED APPROACH: Climb to 3000 direct CUHSU and hold.
▼	Rwy 31 helicopter visibility reduction below 1 SM NA. Use Wheeling altimeter setting; when not received, use Washington altimeter setting and increase all MDA 40 feet. Procedure NA at night.	
▲ NA		
HLG ASOS	CLEVELAND CENTER	UNICOM
127.375	126.95 239.30	122.8 (CTAF) 0



EC-2, 14 MAY 2026 to 11 JUN 2026

EC-2, 14 MAY 2026 to 11 JUN 2026

ELEV 1174	TDZE 1163
-----------	-----------



3000	CUHSU	Visual Segment - Obstacles.	4 NM Holding Pattern
		JOLMU 2.5 NM to RW31	SUXPU
		1940	2800
		2.5 NM	2.7 NM
		6 NM	
CATEGORY	A	B	C
LNNAV MDA	1660-1	497 (500-1)	NA