

APP CRS	Rwy Ldg	4101
143°	TDZE	1746
	Apt Elev	1766

RNAV (GPS) RWY 14

CORRY-LAWRENCE (8G2)

RNP APCH - GPS.

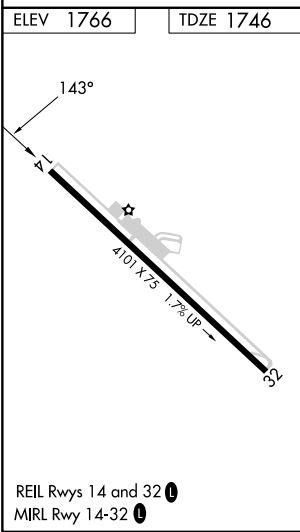
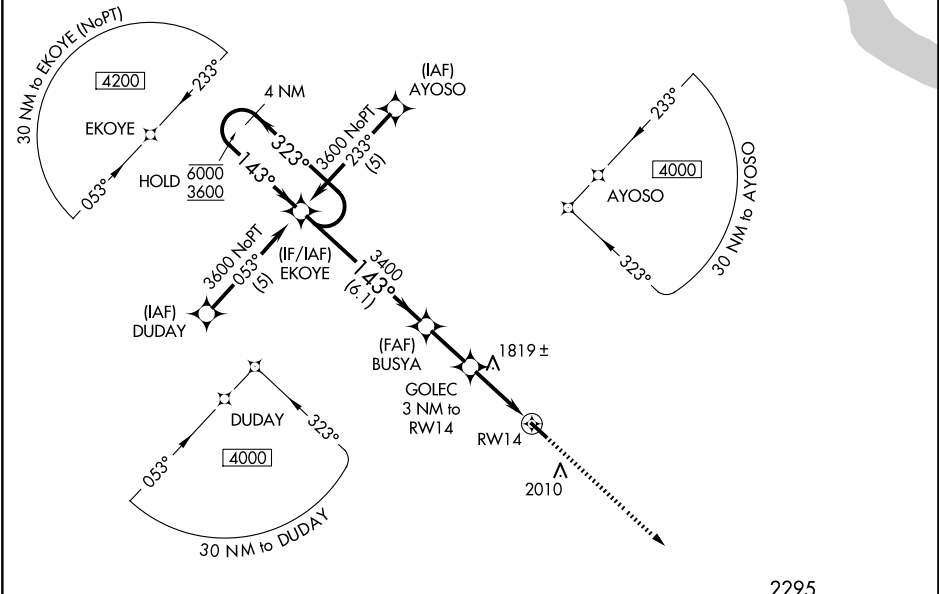
NA Rwy 14 helicopter visibility reduction below 1 SM NA. Procedure NA at night. Use JHW altimeter setting; when not received, use GJK altimeter setting and increase all MDA 80 feet; increase LNAV Cat C visibility ¼ SM.

MISSED APPROACH: Climb to 3600 direct CUXOM and hold.

JHW AWOS-3PT
118.425

BUFFALO APP CON *
121.0 257.8

UNICOM
122.8 (CTAF) 0



4 NM Holding Pattern EKOYE				3600	CUXOM
6000 ← 323° 3600 → 143°				↑	✧
143° → 143° → 143° → 3400					
3400 → 3.04° TCH 40 → 2700				GOLEC 3 NM to RWY 14 RWY 14	
6.1 NM 2.2 NM 3 NM					
CATEGORY	A	B	C	D	
LNAV MDA	2140-1 394 (400-1)		2140-1½ 394 (400-1½)		NA

NE-4, 14 MAY 2026 to 11 JUN 2026

NE-4, 14 MAY 2026 to 11 JUN 2026