

# RNAV (GPS) RWY 32

CORRY-LAWRENCE (8G2)

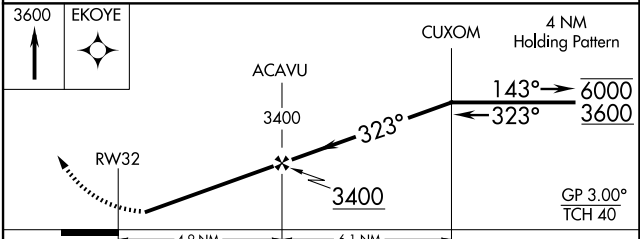
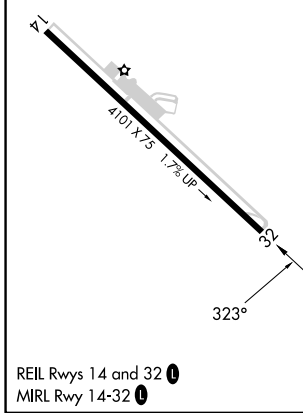
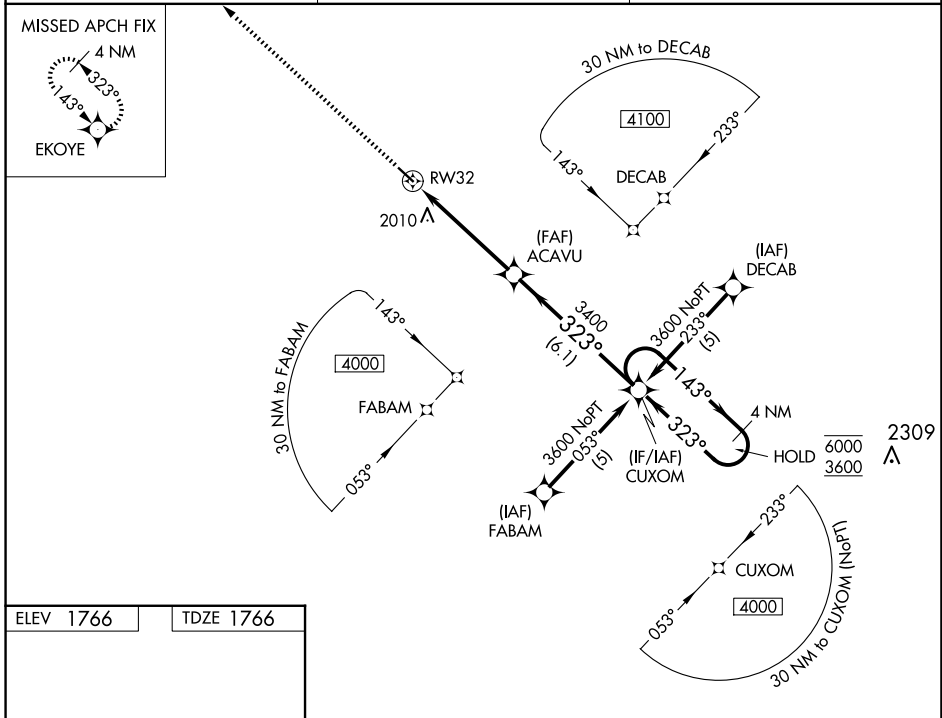
WAAS CH <b>70719</b> <b>W32A</b>	APP CRS <b>323°</b>	Rwy Ldg TDZE <b>1766</b> Apt Elev <b>1766</b>
--	------------------------	---

RNP APCH - GPS.

**⚠** Rwy 32 helicopter visibility reduction below 1 SM NA. Baro-VNAV NA. Use JHW altimeter setting; when not received, use GKI altimeter setting and increase LPV DA to 2140 feet; increase LNAV/VNAV DA to 2386 feet and all visibilities 1/8 SM. Increase all MDAs 80 feet and LNAV visibility Cat C 1/2 SM. Procedure NA at night.

MISSED APPROACH:  
Climb to 3600 direct EKOYE and hold.

JHW AWOS-3PT <b>118.425</b>	BUFFALO APP CON * <b>121.0 257.8</b>	UNICOM <b>122.8 (CTAF) 0</b>
--------------------------------	---	---------------------------------



CATEGORY	A	B	C	D
LPV DA	2078-1 312 (400-1)			NA
LNAV/VNAV DA	2324-1 5/8 558 (600-1 5/8)			NA
LNAV MDA	2340-1 574 (600-1)		2340-1 5/8 574 (600-1 5/8)	NA

NE-4, 14 MAY 2026 to 11 JUN 2026

NE-4, 14 MAY 2026 to 11 JUN 2026