

WAAS CH <b>72831</b> <b>W23A</b>	APP CRS <b>228°</b>	Rwy Ldg TDZE Apt Elev	<b>3503</b> <b>1030</b> <b>1031</b>
--	------------------------	-----------------------------	---

# RNAV (GPS) RWY 23

MONROE COUNTY (MNV)

RNP APCH - GPS.

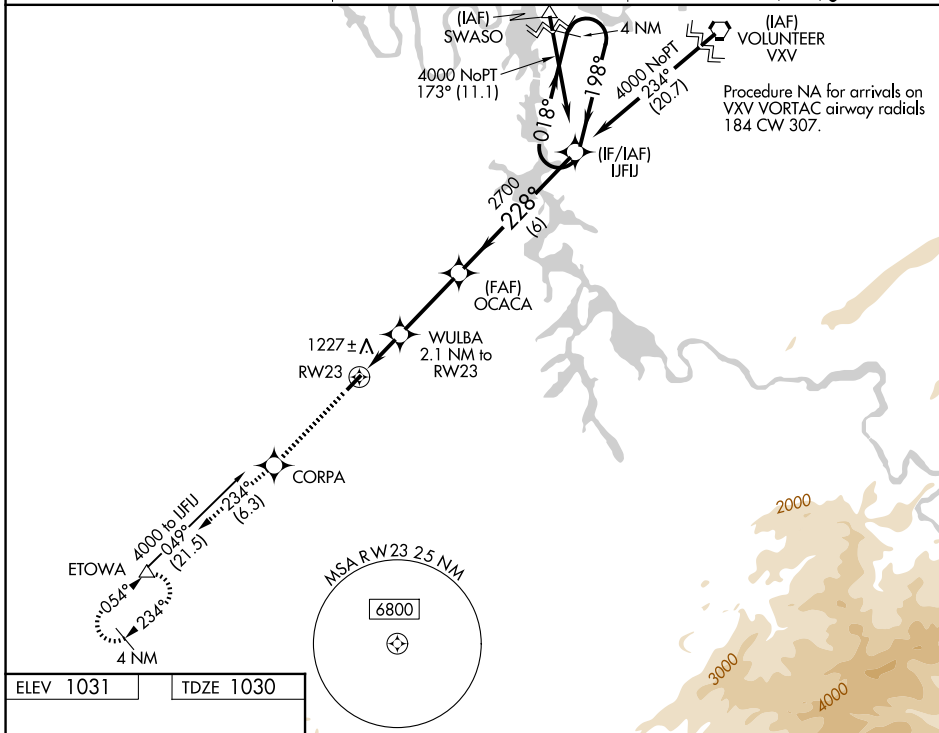
**⚠** Baro-VNAV NA when using Mc Ghee Tyson altimeter setting. For uncompensated Baro-VNAV systems, LNAV/VNAV NA below -17°C or above 54°C. Circling NA NW of Rwy 5-23. When local altimeter setting not received, use Mc Ghee Tyson altimeter setting and increase all DA 64 feet and all MDA 80 feet and increase LPV all Cats, LNAV/VNAV all Cats, LNAV Cat C, and Circling Cat C visibility ¼ mile. Rwy 23 helicopter visibility reduction below 1 SM NA. Procedure NA at night.

**MISSED APPROACH:**  
Climb to 3000  
direct CORPA on  
track 234° to  
ETOWA and hold.

AWOS-3  
**118.475**

KNOXVILLE APP CON  
**123.9 353.6**

UNICOM  
**123.0 (CTAF) 0**

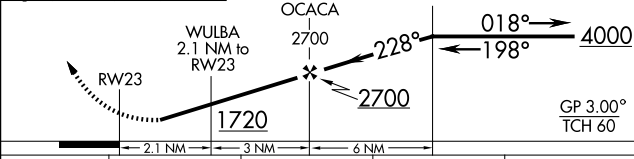
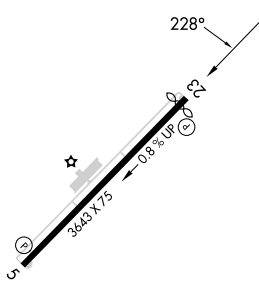


SE-1, 14 MAY 2026 to 11 JUN 2026

SE-1, 14 MAY 2026 to 11 JUN 2026

ELEV 1031	TDZE 1030
-----------	-----------

3000	CORPA	tr 234°	ETOWA	VGSI and RNAV glidepath not coincident (VGSI Angle 3.00/TCH 33).	4 NM Holding Pattern
------	-------	---------	-------	--	----------------------



CATEGORY	A	B	C	D
LPV DA		1376-1 $\frac{1}{8}$	346 (400-1 $\frac{1}{8}$ )	NA
LNAV/VNAV DA		1548-1 $\frac{3}{4}$	518 (600-1 $\frac{3}{4}$ )	NA
LNAV MDA	1480-1	450 (500-1)	1480-1 $\frac{3}{8}$ 450 (500-1 $\frac{3}{8}$ )	NA
CIRCLING	1620-1	589 (600-1)	1640-1 $\frac{3}{4}$ 609 (700-1 $\frac{3}{4}$ )	NA

MIRL Rwy 5-23  
REIL Rws 5 and 23