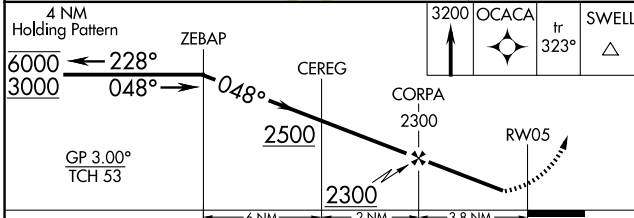
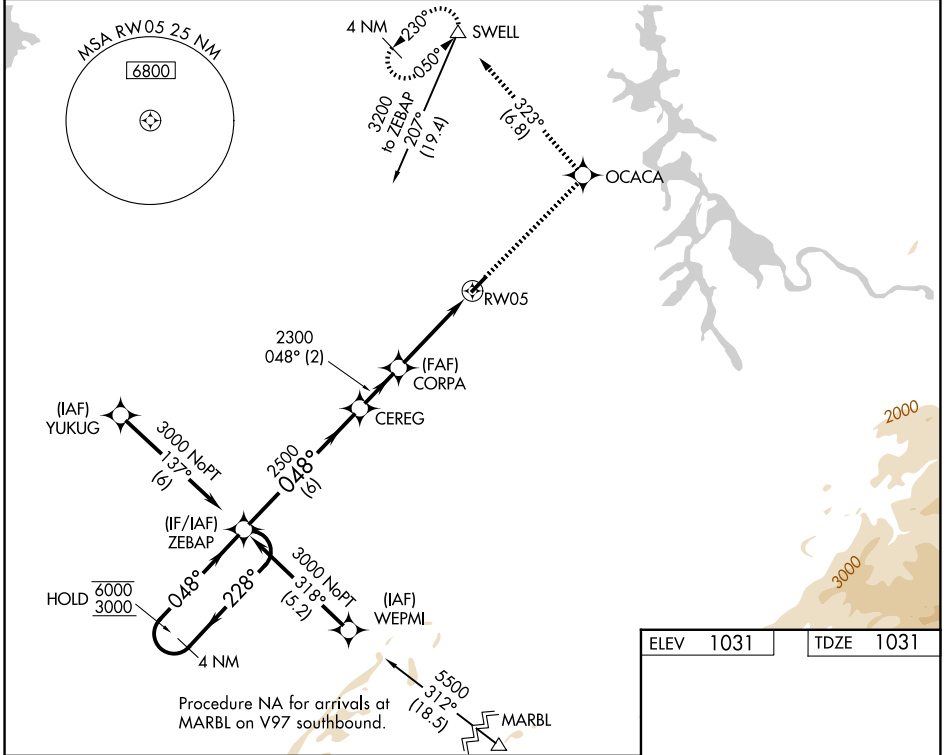


WAAS CH 99531	APP CRS 048°	Rwy Ldg TDZE Apt Elev	3643 1031 1031
W05A			

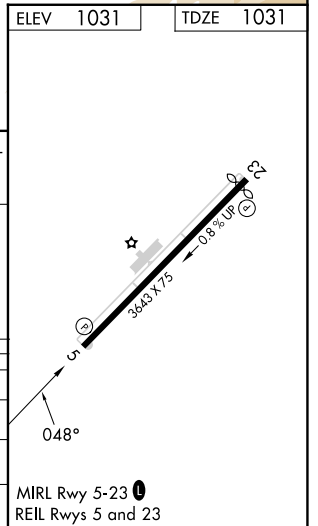
RNAV (GPS) RWY 5

MONROE COUNTY (MNV)

RNP APCH - GPS.		MISSED APPROACH: Climb to 3200 direct OCACA and on track 323° to SWELL and hold.
⚠️ Circling NA NW of Rwy 5-23. Procedure NA at night. Rwy 5 helicopter visibility reduction below 1 SM NA. For uncompensated Baro-VNAV systems, LNAV/VNAV NA below -17°C or above 54°C.		
AWOS-3 118.475	KNOXVILLE APP CON 123.9 353.6	UNICOM 123.0 (CTAF) 0



CATEGORY	A	B	C	D
LPV DA	1395-1	364 (400-1)		NA
LNAV/VNAV DA	1538-1 $\frac{3}{8}$	507 (600-1 $\frac{3}{8}$)		NA
LNAV MDA	1680-1	649 (700-1)	1680-1 $\frac{1}{8}$ 649 (700-1 $\frac{1}{8}$)	NA
CIRCLING	1680-1	649 (700-1)	1680-1 $\frac{1}{8}$ 649 (700-1 $\frac{1}{8}$)	NA



SE-1, 14 MAY 2026 to 11 JUN 2026

SE-1, 14 MAY 2026 to 11 JUN 2026