

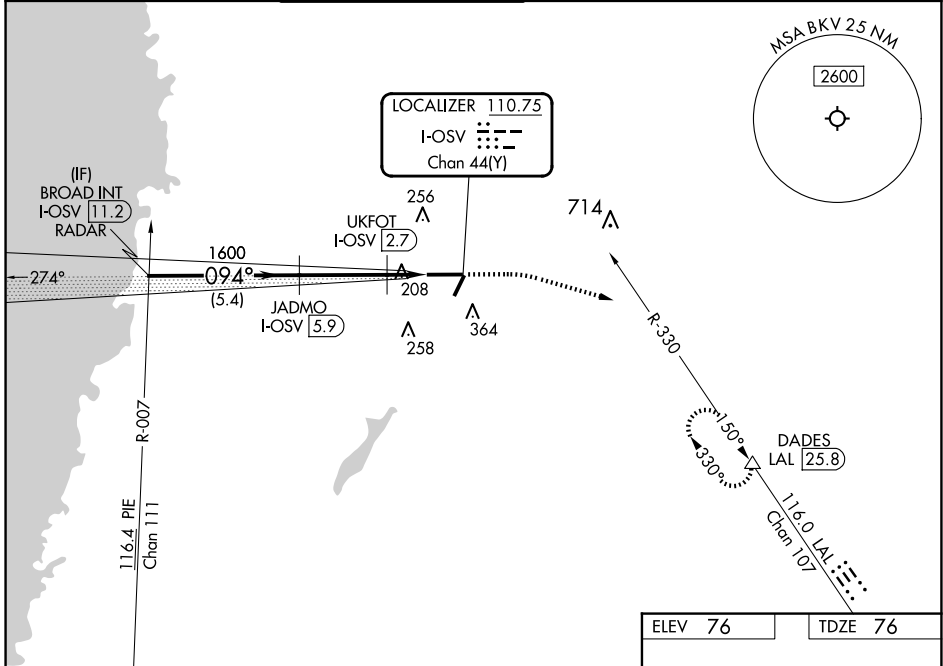
LOC/DME I-OSV <b>110.75</b> Chan <b>44(Y)</b>	APP CRS <b>094°</b>	Rwy Idg <b>7001</b> TDZE <b>76</b> Apt Elev <b>76</b>
---	------------------------	---

# ILS or LOC RWY 9

BROOKSVILLE-TAMPA BAY RGNL (BKV)

RADAR required for procedure entry. DME required.	MALSR 	MISSED APPROACH: Climb to 500 then climbing right turn to 3000 on heading 110° and LAL VORTAC R-330 to DADES/LAL 25.8 DME and hold, continue climb-in-hold to 3000.
NA Circling Rwy 3 NA at night.		

ASOS <b>134.725</b>	TAMPA APP CON <b>125.3 316.05</b>	BROOKSVILLE TOWER ★ <b>118.55 (CTAF)</b>	GND CON <b>121.4</b>	CLNC DEL <b>119.125</b> (When twr closed)	UNICOM <b>123.0</b>
------------------------	--------------------------------------	---	-------------------------	---	------------------------



SE-3, 14 MAY 2026 to 11 JUN 2026

SE-3, 14 MAY 2026 to 11 JUN 2026

	ELEV 76	TDZE 76		
	500	3000	LAL R-330	DADES
			hdg 110°	
BROAD INT I-OSV [11.2] RADAR				
GS 3.00° TCH 56				
CATEGORY	A	B	C	D
S-ILS 9	276-1/2		200 (200-1/2)	
S-LOC 9	460-1/2 384 (400-1/2)		460-5/8 384 (400-5/8)	
CIRCLING	680-1 604 (700-1)		680-1 3/4 604 (700-1 3/4) 760-2 1/4 684 (700-2 1/4)	
MIRL Rwy 3-21 and 9-27				