

VORTAC APE 116.7 Chan 114	APP CRS 194°	Rwy Ldg TDZE Apt Elev 868	N/A N/A 868
---	------------------------	---	--

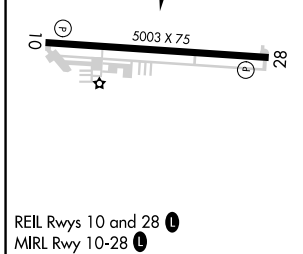
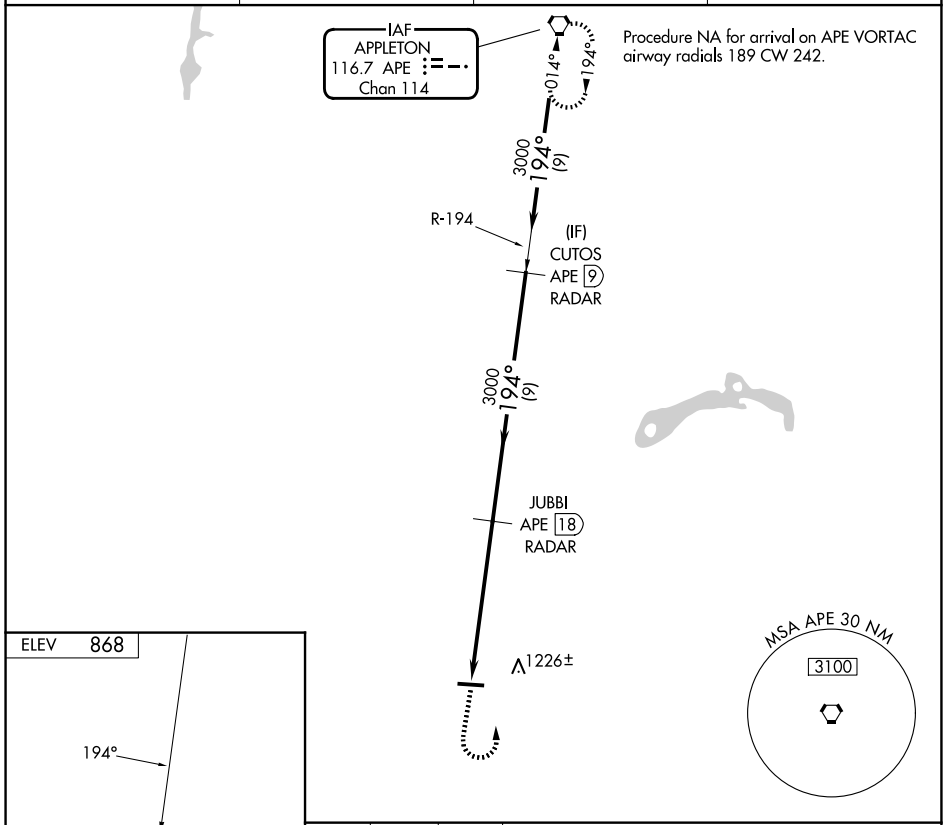
VOR-A
FAIRFIELD COUNTY (L.H.Q)

DME or RADAR required.

▼ When local altimeter setting not received, use Rickenbacker Intl altimeter setting and increase all MDAs 60 feet and visibility Cat C ¼ SM. Circling Rwy 28 NA at night. Rwy 28 helicopter visibility reduction below 1 SM NA.

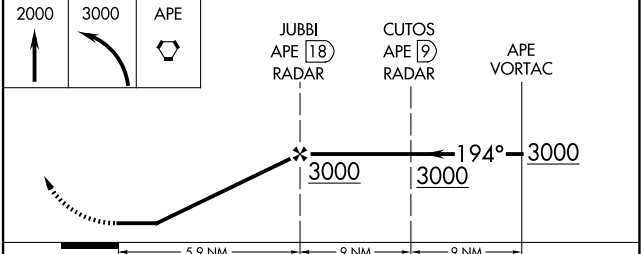
▲ MISSED APPROACH: Climb to 2000 then climbing left turn to 3000 direct APE VORTAC and hold.

ASOS 118.375	COLUMBUS APP CON 134.0 279.6	CLNC DEL 121.65	UNICOM 122.725 (CTAF) 📻
------------------------	--	---------------------------	--



REIL Rwy 10 and 28 **📻**
MIRL Rwy 10-28 **📻**

FAF to MAP 5.9 NM					
Knots	60	90	120	150	180
Min:Sec	5:54	3:56	2:57	2:22	1:58



CATEGORY	A	B	C	D
CIRCLING	1500-1 632 (700-1)	1540-1 672 (700-1)	1620-2¼ 752 (800-2¼)	NA

EC-2, 14 MAY 2026 to 11 JUN 2026

EC-2, 14 MAY 2026 to 11 JUN 2026