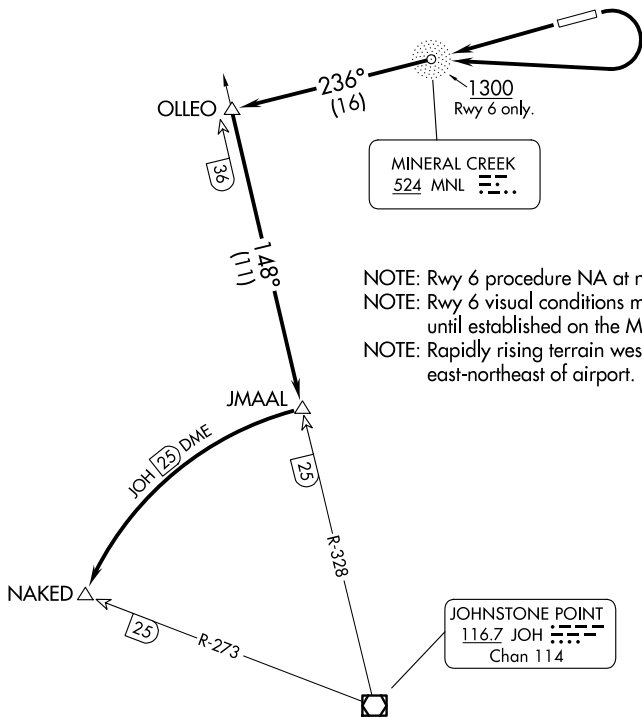


JMAAL FOUR DEPARTURE (OBSTACLE)

ANCHORAGE CENTER
119.3 269.4

ADF and DME required.



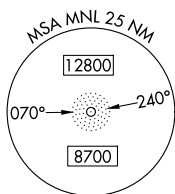
NOTE: Rwy 6 procedure NA at night.
 NOTE: Rwy 6 visual conditions must be maintained until established on the MNL NDB bearing.
 NOTE: Rapidly rising terrain west-northwest to east-northeast of airport.

TAKEOFF MINIMUMS

Rwy 6: 1200-3 with minimum climb of 460'/NM to 6000 from MNL NDB.
 Rwy 24: Standard with minimum climb of 460'/NM to 6000.

TAKEOFF OBSTACLE NOTES

Rwy 24: Trees 469' from DER, 482' right of centerline, up to 100' AGL/137' MSL.
 Trees 623' from DER, 385' left of centerline, up to 100' AGL/130' MSL.



NOTE: Chart not to scale.

DEPARTURE ROUTE DESCRIPTION

TAKEOFF RUNWAY 6: Turn right as soon as practical, climb in visual conditions to MNL NDB at/above 1300, then on MNL NDB bearing 236° to OLLEO INT, thence. . . .

TAKEOFF RUNWAY 24: Climb direct to MNL NDB then on MNL bearing 236° to OLLEO INT, thence. . . .

. . . . continue climb to at/above 6000 on JOH VOR/DME R-328 southbound to JMAAL/JOH VOR/DME 25 DME, fly JOH VOR/DME 25 DME arc counterclockwise to NAKED/JOH VOR/DME R-273 25 DME.

AK, 14 MAY 2026 to 09 JUL 2026

AK, 14 MAY 2026 to 09 JUL 2026