

LOC/DME I-VDZ 109.5 Chan 32	APP CRS 057°	Rwy Ldg TDZE N/A Apt Elev N/A 128
---	------------------------	--

LDA-H

VALDEZ PIONEER FLD (VDZ) (PAVD)

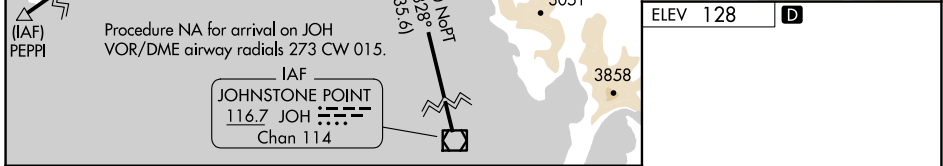
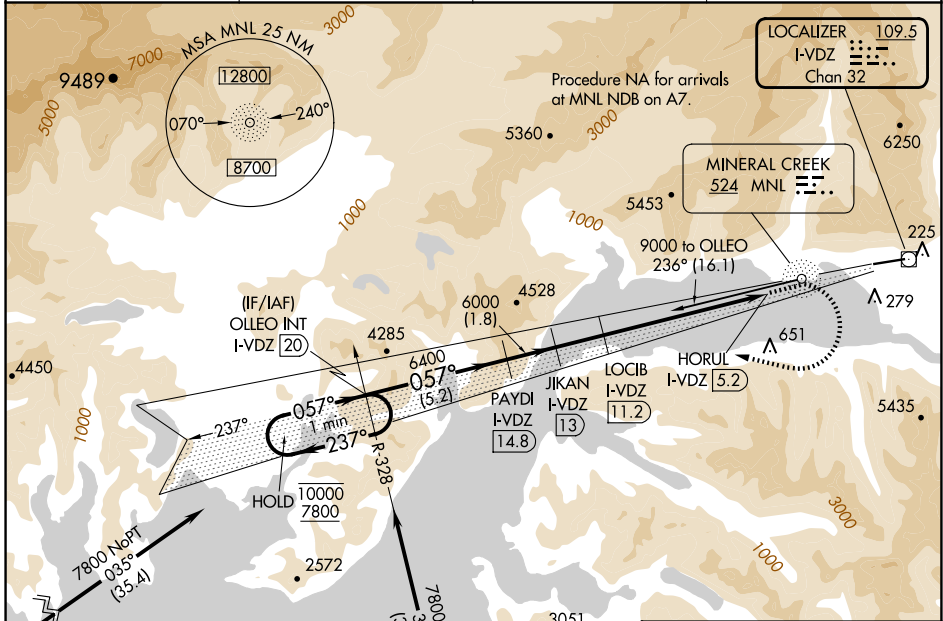
DME required. RNP APCH-GPS. From PEPEI.

⚠ Circling NA north of Rwy 6-24. Circling Rwy 24 NA at night. Rwy 24 helicopter visibility reduction below 1 SM NA. When local altimeter setting not received, use Cordova altimeter setting and increase all MDAs 1020 feet.

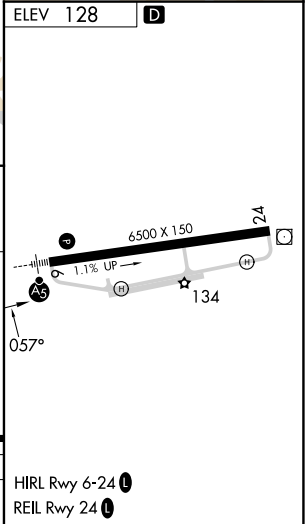
❄ -10°C

MISSED APPROACH: Climb on I-VDZ localizer course to 4600 then climbing right turn to 7800 on heading 265° and I-VDZ SW course (237°) to OLLEO INT/I-VDZ 20 DME and hold, continue climb-in-hold to 7800.

AWOS-3P 118.8	ANCHORAGE CENTER 119.3 269.4	JUNEAU RADIO 122.2	CTAF 122.9 Ⓛ
-------------------------	--	------------------------------	-------------------------------



CATEGORY	A	B	C	D
	4460-5	4332 (4400-5)		5200-5 5072 (5100-5)
CIRCLING				



AK, 14 MAY 2026 to 09 JUL 2026

AK, 14 MAY 2026 to 09 JUL 2026