

| | | |
|-------------|----------|-------------|
| APP CRS | Rwy Ldg | 3803 |
| 100° | TDZE | 424 |
| | Apr Elev | 424 |

RNAV (GPS) RWY 10

WILLIAMSON/SODUS (SDC)

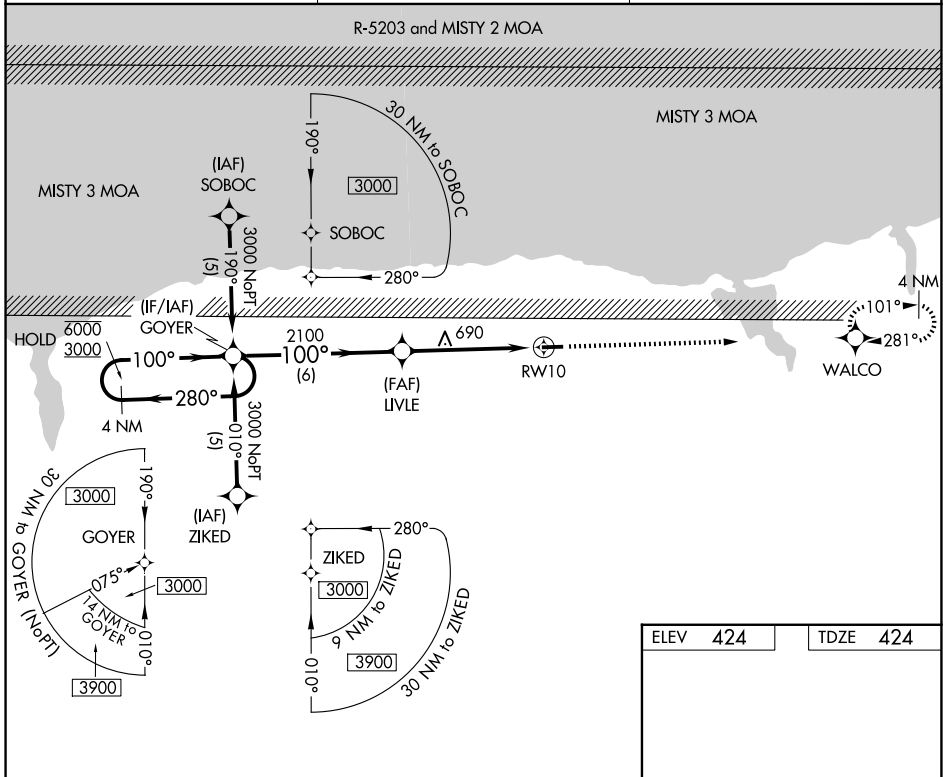
RNP APCH - GPS.

▼ Procedure NA at night. Rwy 10 helicopter visibility reduction below 1 SM NA.

▲ When local altimeter setting not received, use Rochester altimeter setting and increase all MDAs 80 feet and LNAV visibility Cat C 3/8 SM, and Circling visibility Cat C 1/4 SM.

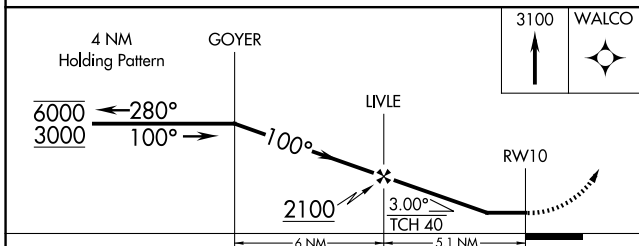
MISSED APPROACH: Climb to 3100 direct WALCO and hold. Continue climb-in-hold to 3100.

| | | |
|------------------------|--|---------------------------------|
| AWOS-3 124.2 | ROCHESTER APP CON 119.55 269.6 | UNICOM 122.8 (CTAF) 0 |
|------------------------|--|---------------------------------|

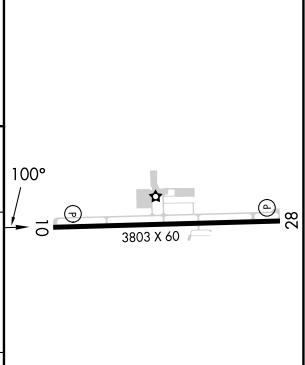


NE-2, 14 MAY 2026 to 11 JUN 2026

NE-2, 14 MAY 2026 to 11 JUN 2026



| | |
|----------|----------|
| ELEV 424 | TDZE 424 |
|----------|----------|



| CATEGORY | A | B | C | D |
|----------|-----------------------|-----------------------|------------------------------|----|
| LNAV MDA | 940-1 | 516 (600-1) | 940-1 3/8 516 (600-1 3/8) | NA |
| CIRCLING | 1000-1 576 (600-1) | 1020-1 596 (600-1) | 1120-2 696 (700-2) | NA |

MIRL Rwy 10-28 0

REIL Rwy 10 and 28 0