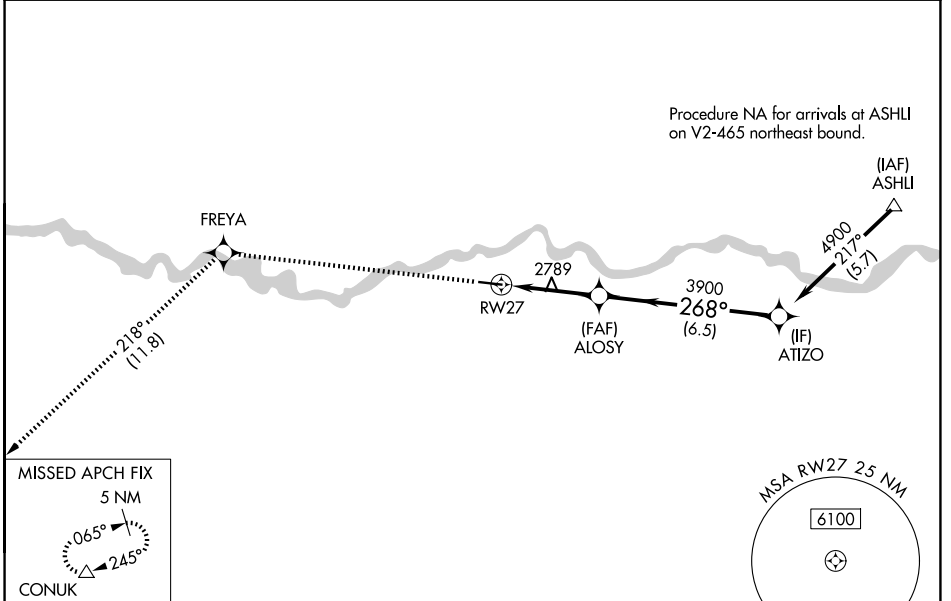


WAAS CH 78125 W27A	APP CRS 268°	Rwy Ldg TDZE Apt Elev	4799 2728 2729
--	------------------------	-----------------------------	---

RNAV (GPS) RWY 27

TILLITT FLD (1S3)

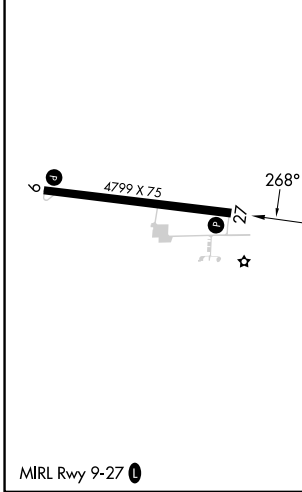
RNP APCH - GPS.		MISSED APPROACH: Climb to 6000 direct FREYA and on track 218° to CONUK and hold.
AWOS-3PT 121.125	SALT LAKE CENTER 126.85 305.2	UNICOM 122.8 (CTAF) 0



NW-1, 14 MAY 2026 to 11 JUN 2026

NW-1, 14 MAY 2026 to 11 JUN 2026

ELEV 2729	TDZE 2728
-----------	-----------



6000	FREYA	tr 218°	CONUK	VGSI and RNAV glidepath not coincident (VGSI Angle 3.00/TCH 29).	ATIZO
↑	✦		△		
		0.9 NM to RWY 27		3900	4900
		0.9 NM	2.6 NM	6.5 NM	
				3900	
				268°	
					GP 3.00° TCH 51
CATEGORY	A		B	C	D
LPV DA			2978-1	250 (300-1)	
LNAV/VNAV DA			2978-1	250 (300-1)	
LNAV MDA			3040-1	312 (400-1)	
CIRCLING	3160-1 431 (500-1)	3380-1 651 (700-1)	3380-1 651 (700-1)	3380-1¾ 651 (700-1¾)	3700-3 971 (1000-3)