

WAAS CH 40314 W35A	APP CRS 352°	Rwy Idg TDZE Apt Elev	5502 2189 2189
--	------------------------	-----------------------------	---

RNAV (GPS) RWY 35

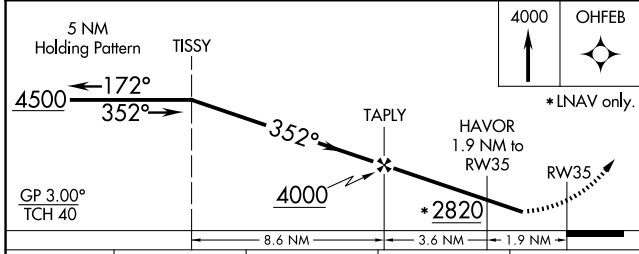
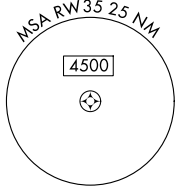
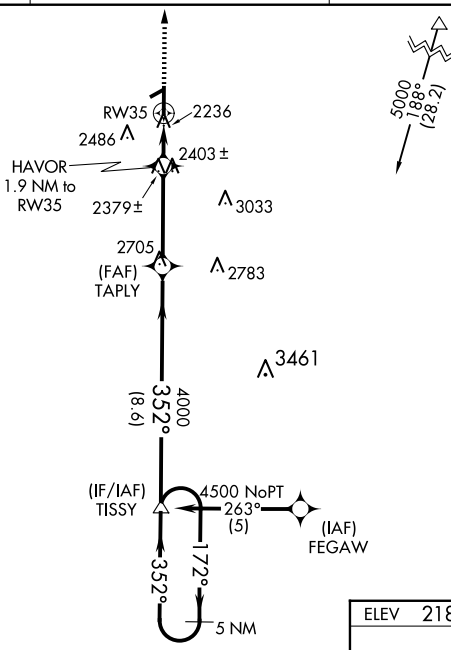
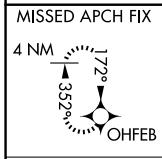
WEST WOODWARD (WWR)

RNP APCH.

⚠ Baro-VNAV NA when using Gage altimeter setting. For uncompensated Baro-VNAV systems, LNAV/VNAV NA below -19°C or above 54°C. When local altimeter setting not received, use Gage altimeter setting and increase all DA/MDA 40 feet and increase LNAV Cat C and D visibility to 1½ SM. Circling Rwy 5, 23 NA at night.

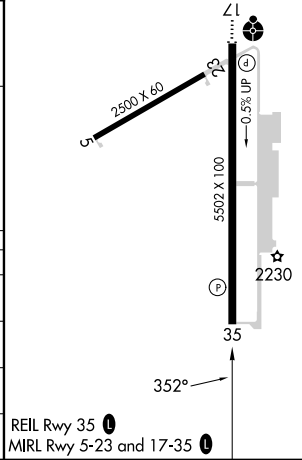
MISSED APPROACH:
Climb to 4000 direct
OHFEB and hold.

AWOS-3 118.425	KANSAS CITY CENTER 126.95 379.2	UNICOM 122.8 (CTAF) 0
--------------------------	---	---------------------------------



ELEV	2189	TDZE	2189
------	------	------	------

CATEGORY	A	B	C	D
LPV DA	2470-1		281 (300-1)	
LNAV/VNAV DA	2506-1¼		317 (400-1¼)	
LNAV MDA	2700-1 511 (600-1)		2700-1½ 511 (600-1½)	
CIRCLING	2700-1 511 (600-1)	2860-1 671 (700-1)	2940-2¼ 751 (800-2¼)	2960-2½ 771 (800-2½)



REIL Rwy 35 **0**
MIRL Rwy 5-23 and 17-35 **0**

SC-1, 14 MAY 2026 to 11 JUN 2026

SC-1, 14 MAY 2026 to 11 JUN 2026