

WAAS CH 58332 W19A	APP CRS 186°	Rwy Ldg TDZE Apt Elev	5002 522 522
--	------------------------	-----------------------------	---

RNAV (GPS) RWY 19

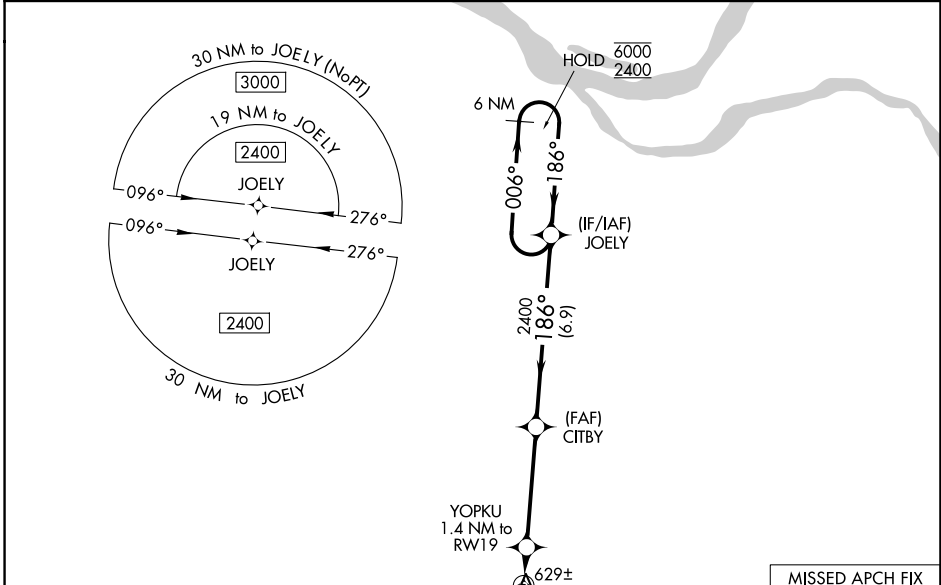
MAYFIELD GRAVES COUNTY (M25)

RNP APCH - GPS.

⚠ Circling Rwy 1 NA at night. Rwy 19 helicopter visibility reduction below 3/4 SM NA. Baro-VNAV NA when using Paducah altimeter setting. For uncompensated Baro-VNAV systems, LNAV/VNAV NA below -16°C or above 54°C. When local altimeter setting not received, use Paducah altimeter setting: increase LPV DA to 833 feet, LNAV/VNAV DA to 977 feet and all visibilities 1/4 SM; increase all MDAs 80 feet and visibility Cats C and D 1/4 SM.

ⓘ MISSED APPROACH: Climb to 2300 direct LUXON and hold.

AWOS-3 120.625	MEMPHIS CENTER 133.65 292.15	UNICOM 122.8 (CTAF) ⓘ
--------------------------	--	---------------------------------



SE-1, 14 MAY 2026 to 11 JUN 2026

SE-1, 14 MAY 2026 to 11 JUN 2026

ELEV 522	TDZE 522
----------	----------

1

MIRL Rwy 1-19 ⓘ
REIL Rwy 1 and 19 ⓘ

2300	LUXON	VGSI and RNAV glidepath not coincident (VGSI Angle 3.00/TCH 35).	6 NM Holding Pattern
↑	⊙	YOPKU 1.4 NM to RWY 19	JOELY
		CITBY 2400	6000 2400
		RWY 19 1020	006° → 186° ←
			GP 3.00° TCH 56
		1.4 NM	4.3 NM
		6.9 NM	
CATEGORY	A	B	C
LPV DA	772-1 250 (300-1)		
LNAV/VNAV DA	916-1 394 (400-1 1/2)		
LNAV MDA	880-1 358 (400-1)		
CIRCLING	1060-1 538 (600-1)	1060-1 1/2 538 (600-1 1/2)	1280-2 1/2 758 (800-2 1/2)