

WAAS CH <b>78432</b> <b>W01B</b>	APP CRS <b>006°</b>	Rwy Ldg TDZE Apt Elev	<b>5002</b> <b>522</b> <b>522</b>
--	------------------------	-----------------------------	---

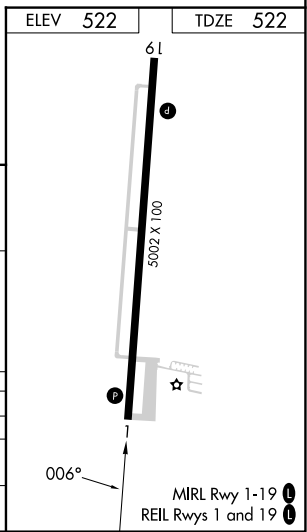
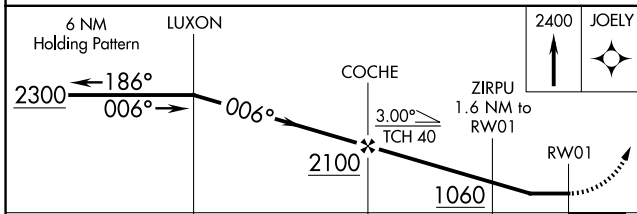
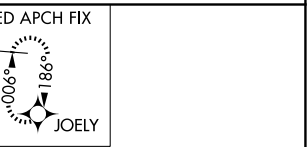
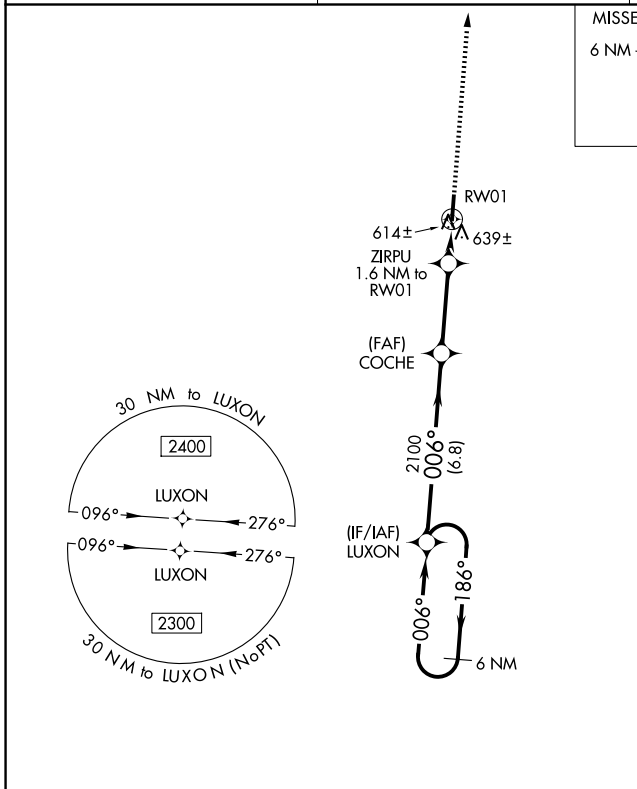
# RNAV (GPS) Y RWY 1

MAYFIELD GRAVES COUNTY (M25)

**⚠️ NA** DME/DME RNP-0.3 NA. When local altimeter setting not received, use Paducah altimeter setting and increase all MDA 80 feet and increase LP Cat C and D visibility  $\frac{3}{8}$  mile and LNAV Cat C and D visibility and Circling Cat C and D visibility  $\frac{1}{4}$  mile. Rwy 1, 19 helicopter visibility reduction below 1 SM NA. Procedure NA at night.

MISSED APPROACH: Climb to 2400 direct JOELY and hold.

AWOS-3 <b>120.625</b>	MEMPHIS CENTER <b>133.65 292.15</b>	UNICOM <b>122.8 (CTAF) ①</b>
--------------------------	--	---------------------------------



CATEGORY	A	B	C	D
LP MDA		880-1	358 (400-1)	
LNAV MDA	900-1	378 (400-1)	900-1½	378 (400-1½)
CIRCLING	1060-1	538 (600-1)	1060-1½	1280-2½ 758 (800-2½)

SE-1, 14 MAY 2026 to 11 JUN 2026

SE-1, 14 MAY 2026 to 11 JUN 2026