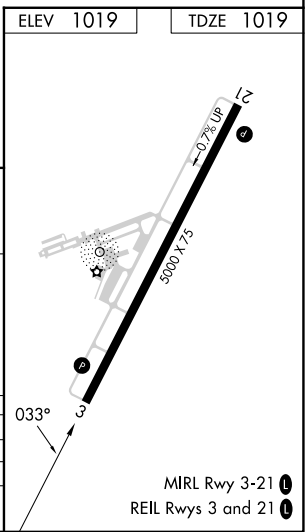
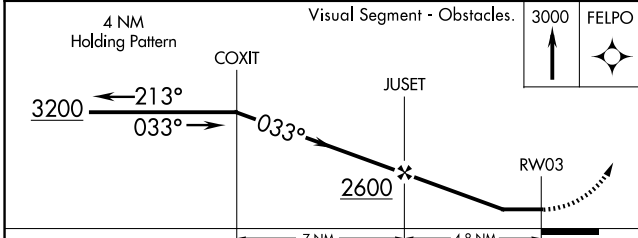
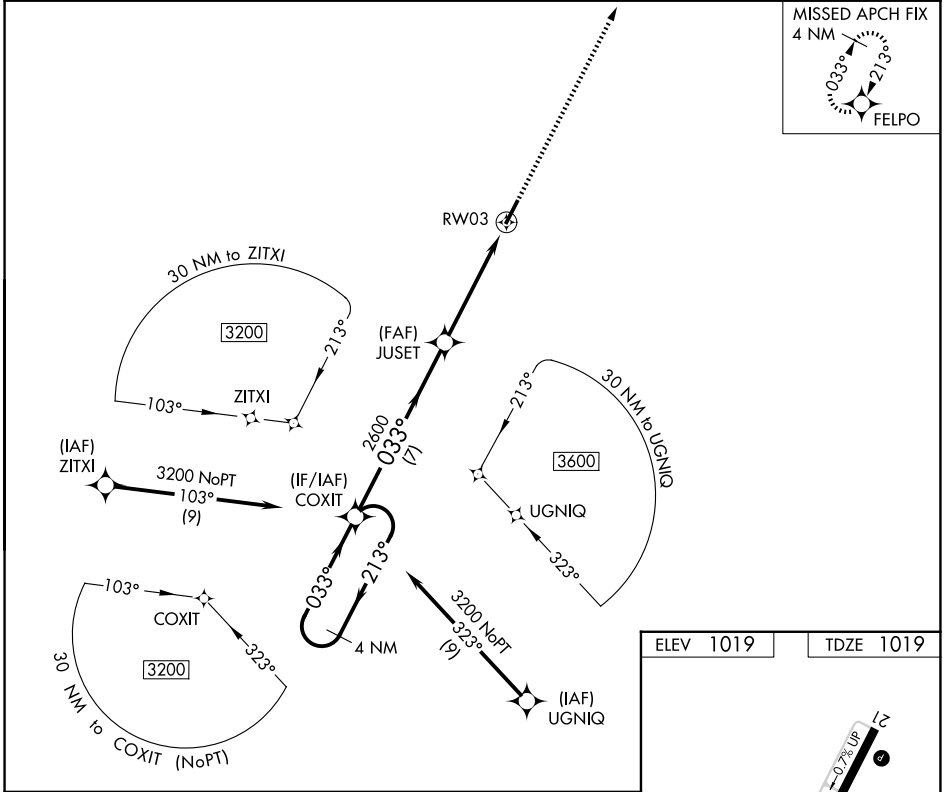


WAAS CH 81933 W03A	APP CRS 033°	Rwy Ldg TDZE Apt Elev	5000 1019 1019
--	------------------------	-----------------------------	---

RNAV (GPS) RWY 3

MOUNT STERLING/MONTGOMERY COUNTY (IOB)

DME/DME RNP-0.3 NA. When local altimeter setting not received, use Lexington altimeter setting and increase all MDA 80 feet and all visibilities ¼ mile. Helicopter visibility reduction below ¾ SM NA.		MISSED APPROACH: Climb to 3000 direct FELPO and hold.	
AWOS-3 120.675	LEXINGTON APP CON 120.15 259.3	GCO 121.72	CTAF 122.8 0



CATEGORY	A	B	C	D
LP MDA	1540-1 521 (600-1)	1540-1½ 521 (600-1½)	1560-1⅝ 541 (600-1⅝)	1740-2 721 (800-2¼)
LNAV MDA	1560-1 541 (600-1)	1560-1⅝ 541 (600-1⅝)	1740-2 721 (800-2¼)	1740-2¼ 721 (800-2¼)
CIRCLING	1560-1 541 (600-1)			

SE-1, 14 MAY 2026 to 11 JUN 2026

SE-1, 14 MAY 2026 to 11 JUN 2026