

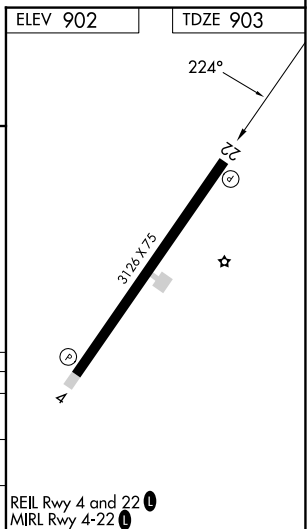
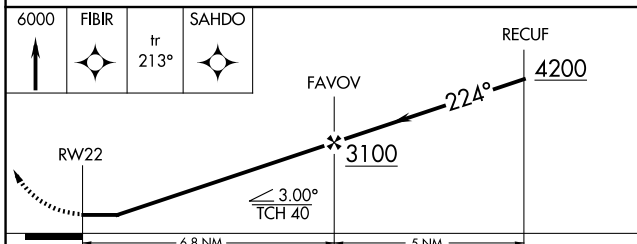
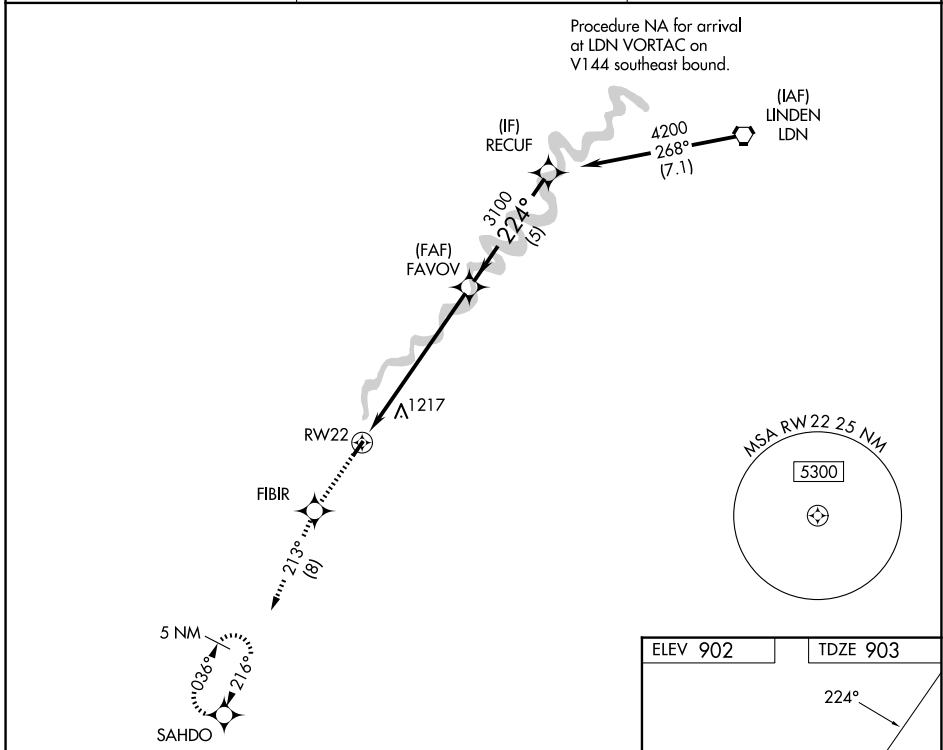
WAAS CH <b>77627</b> <b>W22A</b>	APP CRS <b>224°</b>	Rwy Ldg <b>3126</b> TDZE <b>903</b> Apt Elev <b>902</b>
--	------------------------	---

# RNAV (GPS) RWY 22

LURAY CAVERNS (LUA)

<p><b>▼</b> DME/DME RNP-0.3 NA. Helicopter visibility reduction below 3/4 SM NA. When local altimeter setting not received, use Staunton/Waynesboro/Harrisonburg altimeter setting and increase all MDA 120 feet; increase LNAV Cat B and Circling Cat B visibility 1/4 mile.</p>	<p><b>▲</b> MISSED APPROACH: Climb to 6000 direct FIBIR and on track 213° to SAHDO and hold, continue climb-in-hold to 6000.</p>
---	--

AWOS-3 <b>118.275</b>	WASHINGTON CENTER <b>133.2 282.2</b>	UNICOM <b>122.8 (CTAF) 0</b>
--------------------------	---	---------------------------------



CATEGORY	A	B	C	D
LP MDA	1460-1	557 (600-1)	NA	NA
LNAV MDA	1820-1 1/4	917 (1000-1 1/4)	NA	NA
CIRCLING	1820-1 1/4	918 (1000-1 1/4)	NA	NA

NE-3, 14 MAY 2026 to 11 JUN 2026

NE-3, 14 MAY 2026 to 11 JUN 2026