

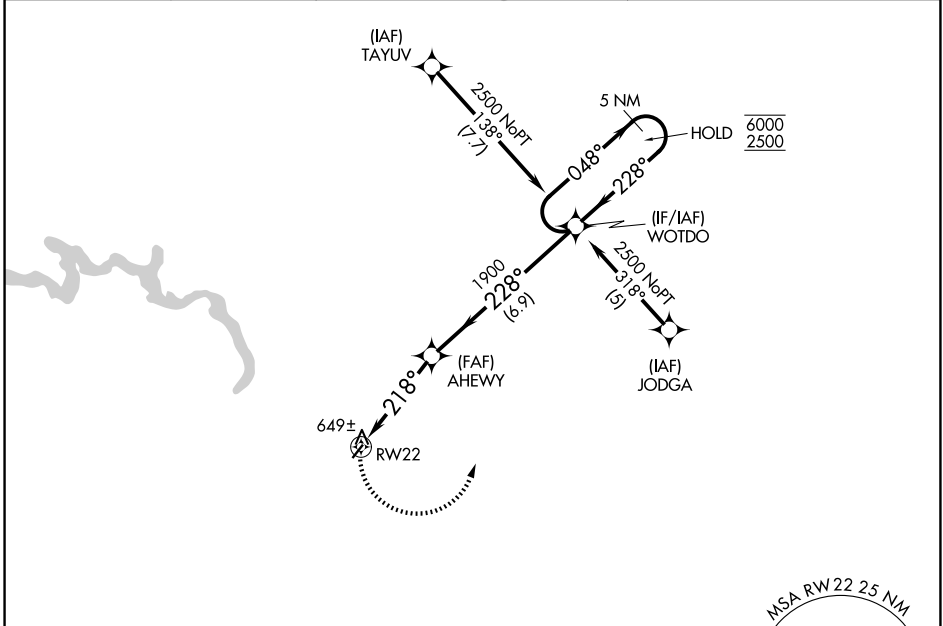
APP CRS	Rwy Ldg	2812
218°	TDZE	538
	Apt Elev	538

RNAV (GPS) RWY 22

MALVERN MUNI (M78)

RNP APCH - GPS.	<p>▼ Rwy 22 helicopter visibility reduction below 1 SM NA. Use Hot Springs altimeter setting; when not received use Bill and Hillary Clinton Nil/Adams Fld altimeter setting and increase all MDAs 80 feet. Procedure NA at night.</p> <p>▲ NA</p>	MISSED APPROACH: Climbing left turn to 2500 direct WOTDO and hold.
-----------------	--	--

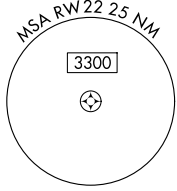
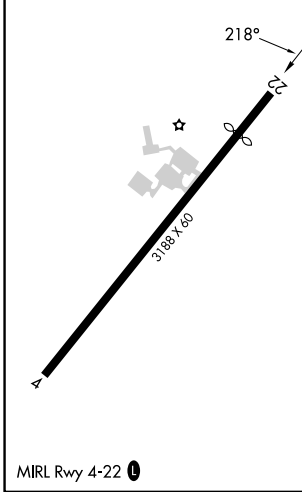
HOT ASOS 119.925	MEMPHIS CENTER 128.475 377.15	UNICOM 122.8(CTAF) 0
----------------------------	---	--------------------------------



SC-1, 14 MAY 2026 to 11 JUN 2026

SC-1, 14 MAY 2026 to 11 JUN 2026

ELEV 538	TDZE 538
----------	----------



2500 WOTDO	Visual Segment - Obstacles.	5 NM Holding Pattern		
		<p>6000 2500</p>		
4.1 NM		6.9 NM		
CATEGORY	A	B	C	D
LNAV MDA	960-1	422 (500-1)	NA	
CIRCLING	1000-1 462 (500-1)	1080-1 542 (600-1)	NA	