

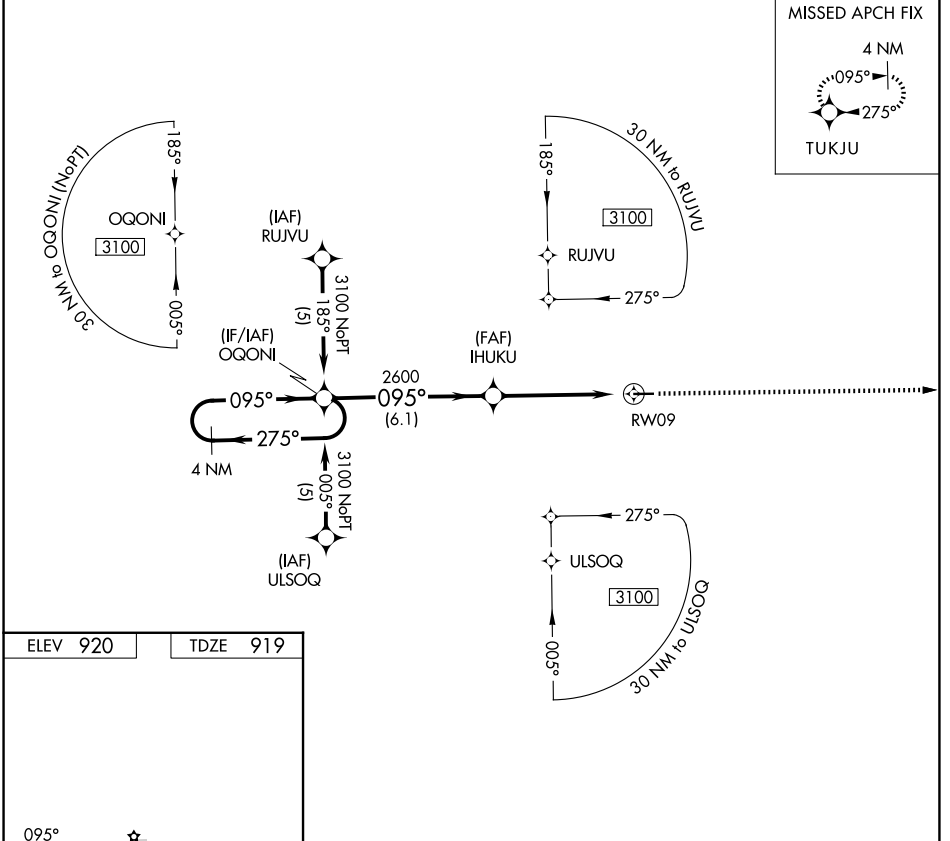
APP CRS	Rwy Ldg	3732
095°	TDZE	919
	Apt Elev	920

RNAV (GPS) RWY 9

PRICES (9G2)

RNP APCH.	Use Flnt altimeter setting; when not received, use Howell altimeter setting. Procedure NA at night. Rwy 9 helicopter visibility reduction below 1 SM NA.	MISSED APPROACH: Climb to 2900 direct TUKJU and hold.
-----------	---	---

FNT ASOS 133.15	GREAT LAKES APP CON ★ 128.55 257.9	UNICOM 123.0 (CTAF) 0
---------------------------	--	---------------------------------



EC-1, 14 MAY 2026 to 11 JUN 2026

EC-1, 14 MAY 2026 to 11 JUN 2026

