

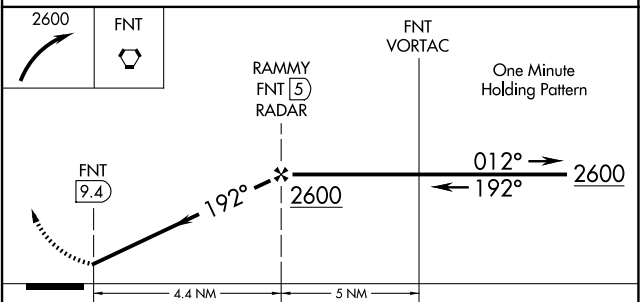
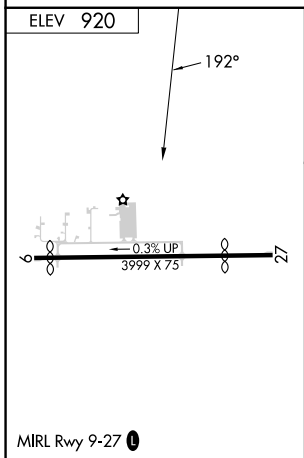
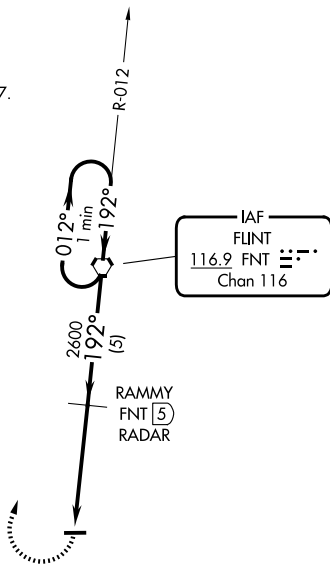
VORTAC FNT 116.9 Chan 116	APP CRS 192°	Rwy Ldg TDZE Apt Elev	N/A N/A 920
---	------------------------	-----------------------------	--

VOR-A
PRICES (9G2)

DME or RADAR required.		MISSED APPROACH: Climbing right turn to 2600 direct FNT VORTAC and hold.
▼ Use Flint altimeter setting; when not received, use Howell altimeter setting.	▲ NA Procedure NA at night.	

FNT ASOS 133.15	GREAT LAKES APP CON ★ 128.55 257.9	UNICOM 123.0 (CTAF) 0
---------------------------	--	--

NoPT for arrivals on
FNT VORTAC
airway radials 286 CW 097.



FAF to MAP 4.4 NM					CATEGORY	A	B	C	D
Knots	60	90	120	150	180	1460-1 540 (600-1)		NA	
Min:Sec	4:24	2:56	2:12	1:46	1:28				