

WAAS CH 93936 W16A	APP CRS 160°	Rwy Ldg TDZE 1257 Apt Elev 1266	5000
--	------------------------	---	-------------

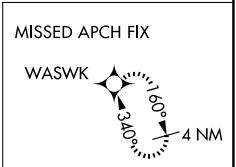
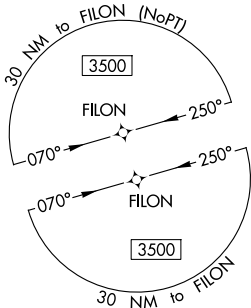
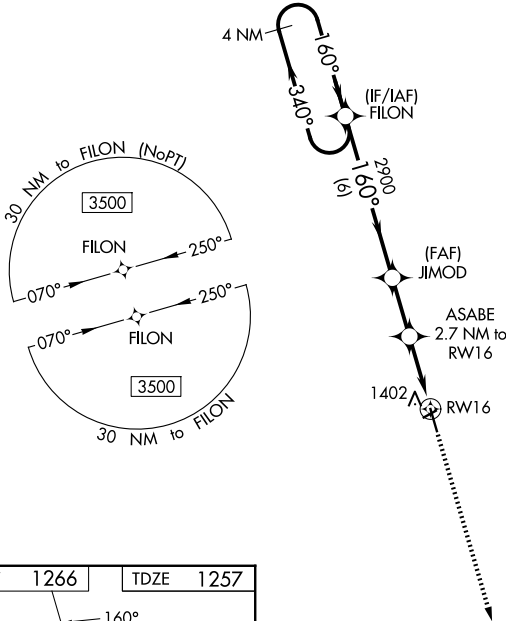
RNAV (GPS) RWY 16

GWINNER/ROGER MELROE FLD (GWR)

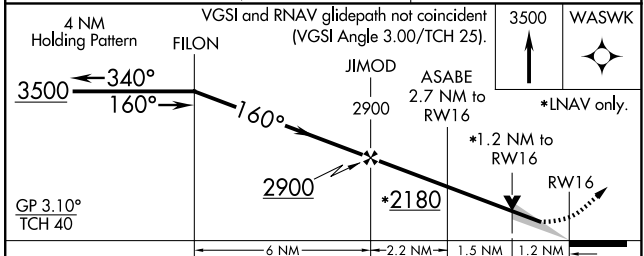
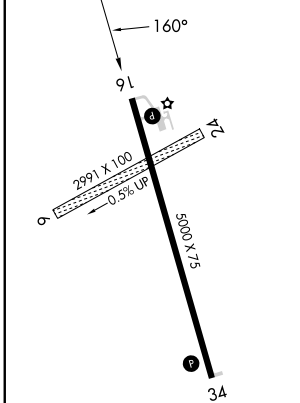
⚠ For uncompensated Baro-VNAV systems, LNAV/VNAV NA below -17°C (2°F) or above 47°C (117°F). DME/DME RNP-0.3 NA. Circling NA to Rwy's 6 and 24. Baro-VNAV and VDP NA when using Fargo altimeter setting. When local altimeter setting not received, use Fargo altimeter setting: increase LPV DA to 1683 feet and visibility 3/8 SM, and LNAV/VNAV DA to 1803 feet and visibility 5/8 SM; increase all MDAs 180 feet and visibility LNAV Cat C/D 5/8 SM, and Circling Cat C 3/4 SM, and Circling Cat D 1/2 SM.

MISSED APPROACH:
Climb to 3500 direct WASWK and hold.

AWOS-3 118.325	MINNEAPOLIS CENTER 127.35 278.3	UNICOM 122.7 (CTAF) 0
--------------------------	---	---------------------------------



ELEV 1266	TDZE 1257
-----------	-----------



CATEGORY	A	B	C	D
LPV DA	1507-1 250 (300-1)			
LNAV/VNAV DA	1627-1¼ 370 (400-1¼)			
LNAV MDA	1660-1	403 (400-1)	1660-1½	403 (400-1½)
CIRCLING	1780-1	514 (600-1)	1840-1½ 574 (600-1½)	2060-2½ 794 (800-2½)

MIRL Rwy 16-34
REIL Rwy's 16 and 34

NC-1, 14 MAY 2026 to 11 JUN 2026

NC-1, 14 MAY 2026 to 11 JUN 2026