

APP CRS	Rwy Idg	<b>3558</b>
<b>049°</b>	TDZE	<b>890</b>
	Apt Elev	<b>896</b>

# RNAV (GPS) RWY 5

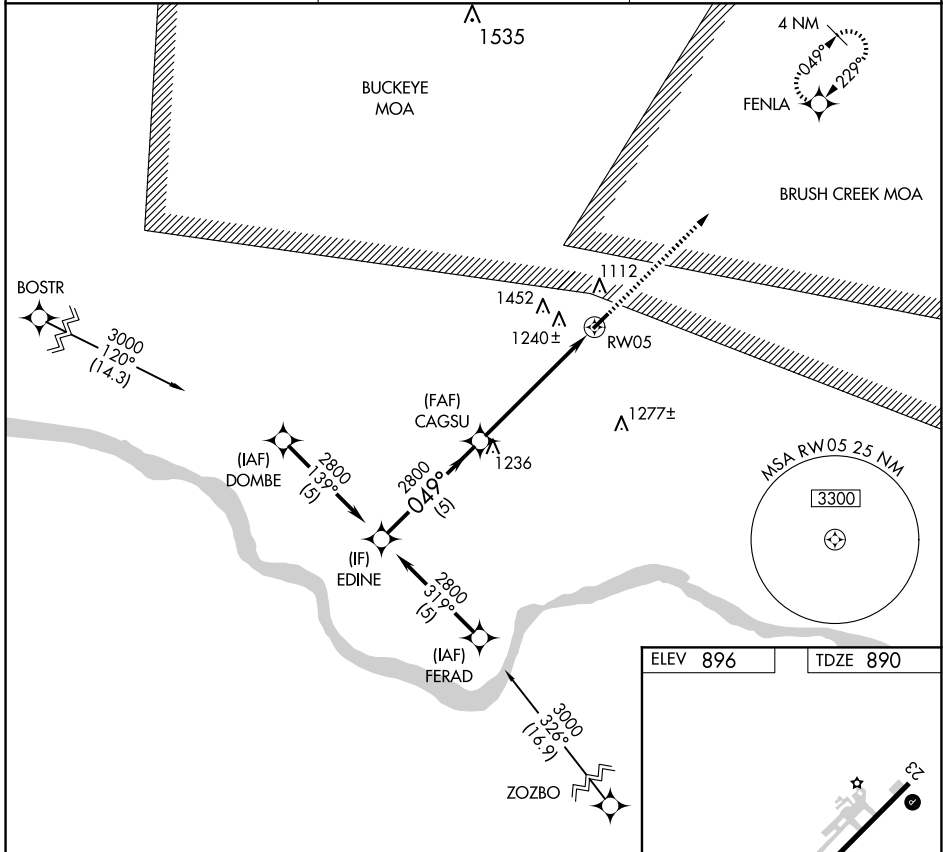
ALEXANDER SALAMON (A.M.T.)

RNP APCH.

Procedure NA at night. Rwy 5 helicopter visibility reduction below 1 SM NA.  
 Use Flemingsburg, Kentucky altimeter setting.

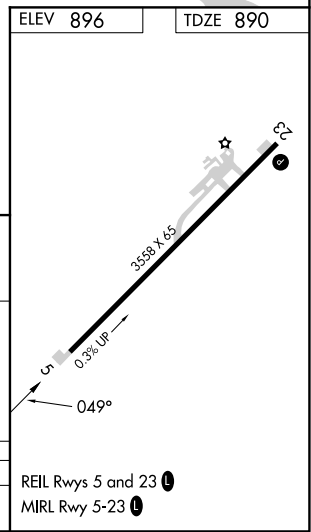
MISSED APPROACH: Climb to 2800 direct FENLA and hold.

FGX AWOS-3 <b>118.125</b>	INDIANAPOLIS CENTER <b>135.575 290.5</b>	UNICOM <b>122.8 (CTAF) 0</b>
------------------------------	---	---------------------------------



EC-2, 14 MAY 2026 to 11 JUN 2026

EC-2, 14 MAY 2026 to 11 JUN 2026



Visual Segment - Obstacles.				2800	FENLA
EDINE	CAGSU				
2800	2800				
	5 NM	5.8 NM			
CATEGORY	A	B	C	D	
LNAV MDA	1480-1	590 (600-1)	1480-1¾ 590 (600-1¾)	NA	