

|             |          |             |
|-------------|----------|-------------|
| APP CRS     | Rwy Idg  | <b>3302</b> |
| <b>043°</b> | TDZE     | <b>648</b>  |
|             | Apt Elev | <b>648</b>  |

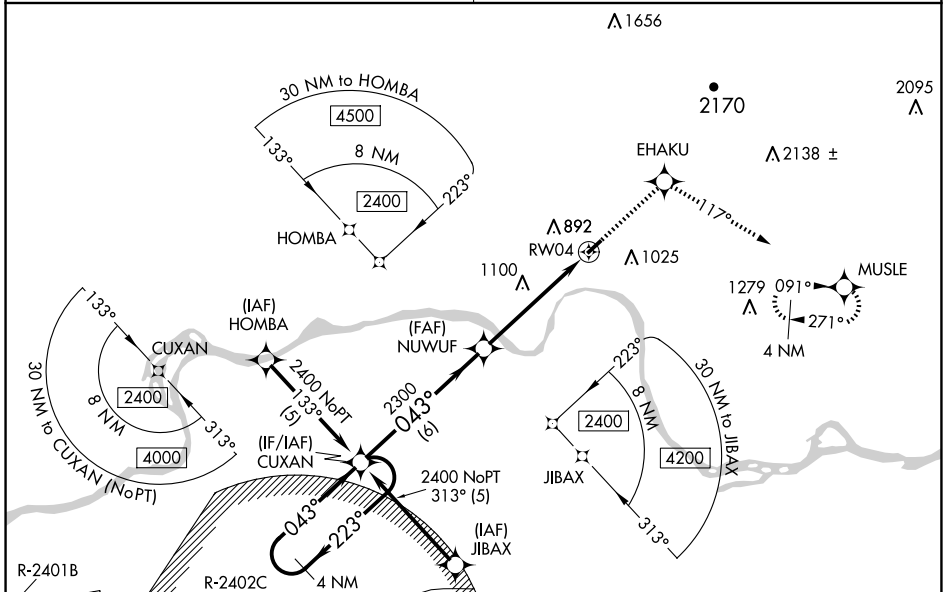
# RNAV (GPS) RWY 4

OZARK/FRANKLIN COUNTY (7M5)

**▼** DME/DME RNP-0.3 NA. Visibility reduction by helicopters NA. Use Fort Smith altimeter setting; when not received, use Drake Fld altimeter setting and increase all MDAs 80 feet; increase LNAV Cat A/C and Circling Cat C visibility ¼ SM.  
**▲** NA MISSED APPROACH: Climb to 3200 direct EHAKU and on track 117° to MUSLE and hold.

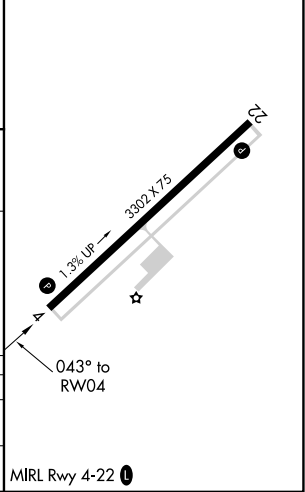
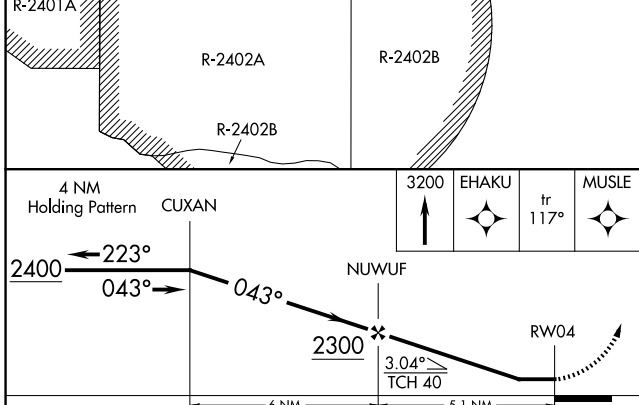
**RAZORBACK APP CON ★**  
**120.9 343.75**

**UNICOM**  
**122.8 (CTAF) 0**



Holding at CUXAN and JIBAX initial NA when R-2402 active.

|          |          |
|----------|----------|
| ELEV 648 | TDZE 648 |
|----------|----------|



| CATEGORY | A                       | B                       | C                       | D  |
|----------|-------------------------|-------------------------|-------------------------|----|
| LNAV MDA | 1480-1<br>832 (900-1)   | 1480-1¼<br>832 (900-1¼) | 1480-2½<br>832 (900-2½) | NA |
| CIRCLING | 1480-1¼<br>832 (900-1¼) |                         | 1500-2½<br>852 (900-2½) | NA |

MRL Rwy 4-22 0

SC-1, 14 MAY 2026 to 11 JUN 2026

SC-1, 14 MAY 2026 to 11 JUN 2026