

WAAS CH 77639 W31A	APP CRS 320°	Rwy Ldg TDZE Apt Elev	6631 5289 5320
--	------------------------	-----------------------------	---

RNAV (GPS) Z RWY 31

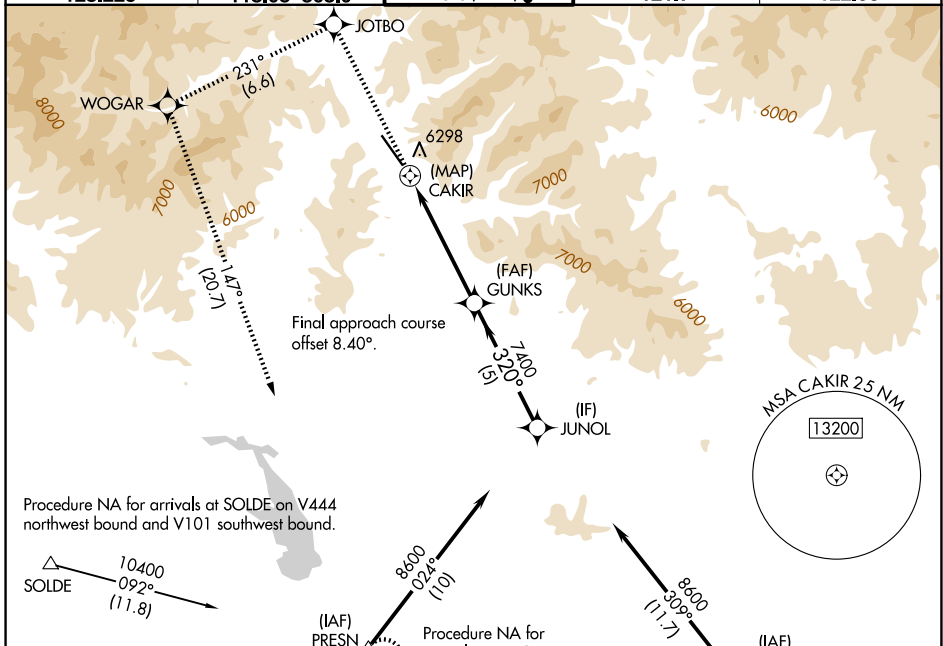
FRIEDMAN MEML (SUN)

RNP APCH - GPS.

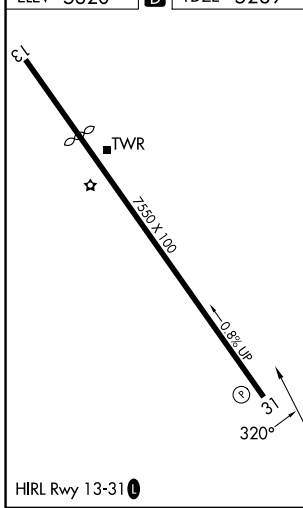
MISSED APPROACH: (Do not exceed 185K until WOGAR) Climb to 10500 direct JOTBO and on track 231° to WOGAR and on track 147° to PRESN and hold. *Missed approach requires minimum climb of 420 feet per NM to 9500; if unable to meet climb gradient, see RNAV (GPS) Y RWY 31.

When local altimeter setting not received, procedure NA.
-13°C

ATIS 128.225	SALT LAKE CENTER 118,05 363.0	HAILEY TOWER * 125.6 (CTAF) 0	GND CON 121.7	UNICOM 122.95
------------------------	---	--	-------------------------	-------------------------



ELEV 5320 **D** TDZE 5289



10500	JOTBO	tr 231°	WOGAR	tr 147°	PRESN	GUNKS	JUNOL
			1.8 NM to CAKIR			7400	8600
			0.5 NM	1.8 NM	3.3 NM	5 NM	
CATEGORY	A		B		C		D
LP MDA*	6180-1¼		891 (900-1¼)		6180-2½		891 (900-2½)
LNAV MDA*	6920-1¼ 1631 (1600-1¼)		6920-1½ 1631 (1600-1½)		6920-3		1631 (1600-3)

NW-1, 14 MAY 2026 to 11 JUN 2026

NW-1, 14 MAY 2026 to 11 JUN 2026