

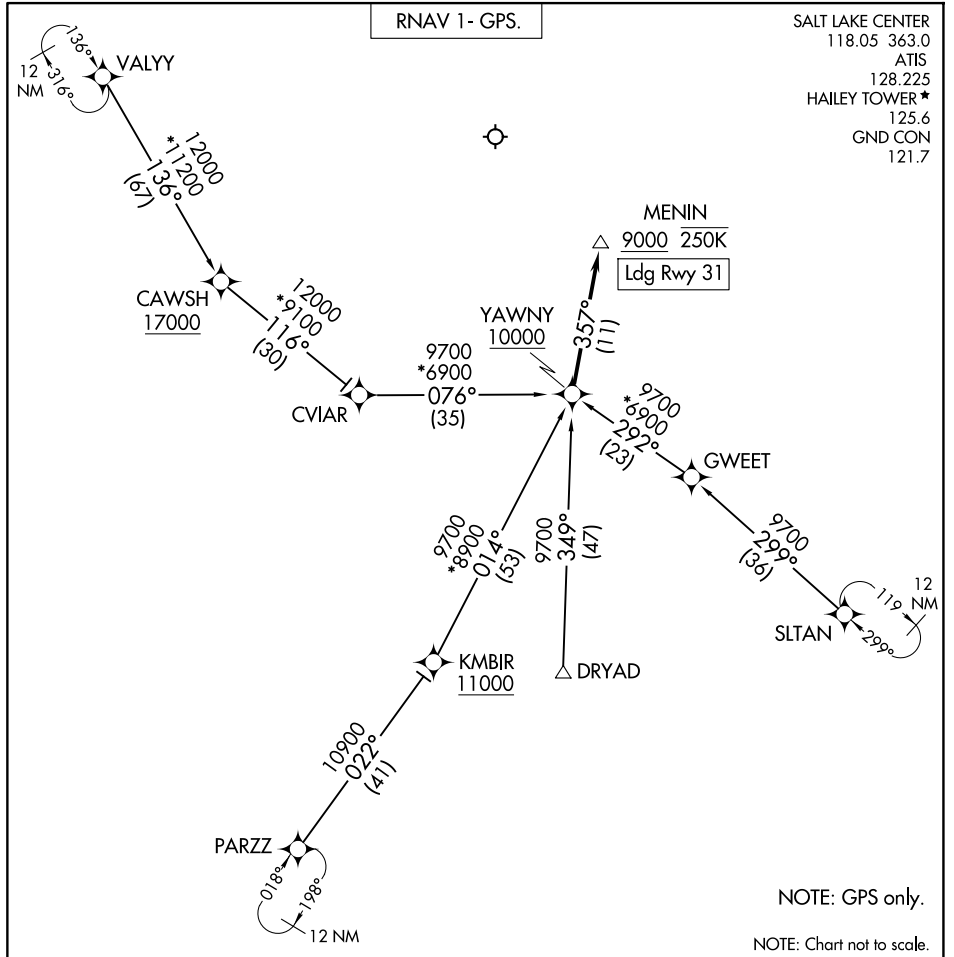
(YAWNY.YAWNY1) 25107

YAWNY ONE ARRIVAL (RNAV)

AL-6239 (FAA)

FRIEDMAN MEML (SUN)

HAILEY, IDAHO



NW-1, 14 MAY 2026 to 11 JUN 2026

NW-1, 14 MAY 2026 to 11 JUN 2026

ARRIVAL ROUTE DESCRIPTION

- CVIAR TRANSITION (CVIAR.YAWNY1)
- DRYAD TRANSITION (DRYAD.YAWNY1)
- GWEET TRANSITION (GWEET.YAWNY1)
- PARZZ TRANSITION (PARZZ.YAWNY1)
- SLTAN TRANSITION (SLTAN.YAWNY1)
- VALYY TRANSITION (VALYY.YAWNY1)

LANDING RUNWAY 31: From YAWNY on track 357° to cross MENIN at or above 9000 and at or below 250K. Expect RNAV Rwy 31 approach.

LOST COMMUNICATIONS: After MENIN, conduct RNAV (GPS) X RWY 31 or RNAV (GPS) Y RWY 31 approach.

YAWNY ONE ARRIVAL (RNAV)

(YAWNY.YAWNY1) 17APR25

HAILEY, IDAHO
FRIEDMAN MEML (SUN)