

WAAS CH <b>42638</b> <b>W09A</b>	APP CRS <b>093°</b>	Rwy Ldg TDZE Apt Elev	<b>4201</b> <b>708</b> <b>708</b>
--	------------------------	-----------------------------	---

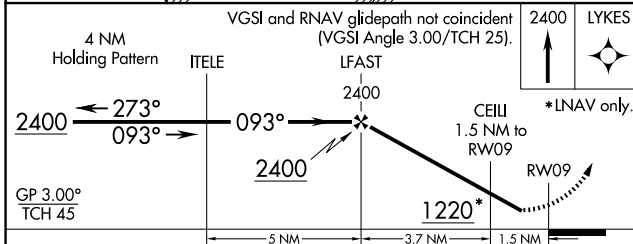
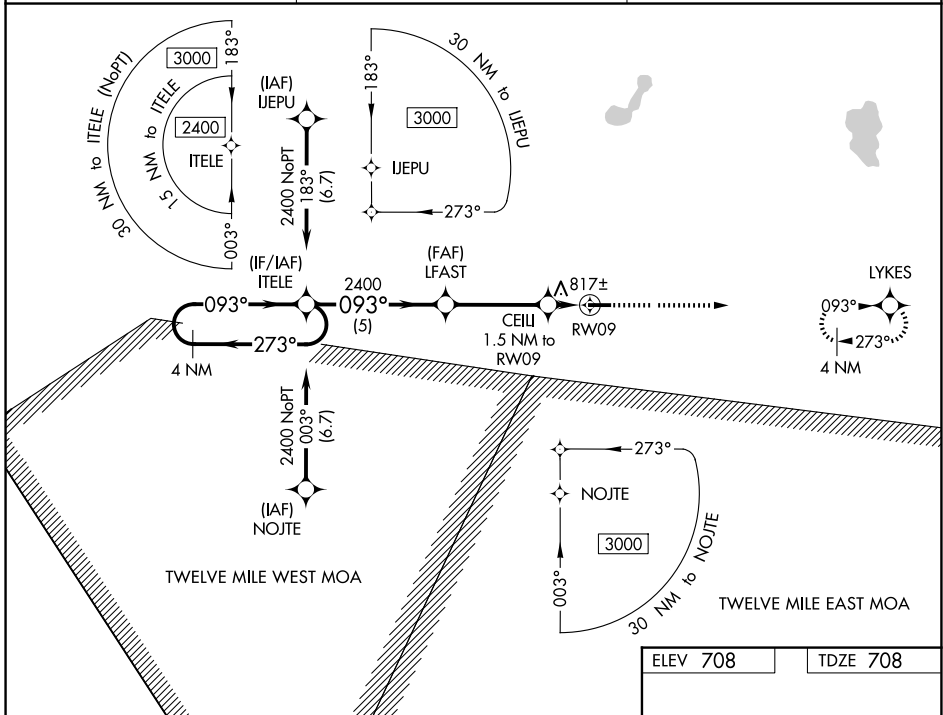
# RNAV (GPS) RWY 9

ARENS FLD (RWN)

**Baro-VNAV NA.** Use Knox altimeter setting; when not received, use Rochester altimeter setting and increase all DA/MDA 20 feet and LNAV Cat C visibility 1/8 mile.  
**NA** DME/DME RNP-0.3 NA. Helicopter visibility reduction below 3/4 SM NA.

MISSED APPROACH: Climb to 2400 direct LYKES and hold.

OXI AWOS-3 <b>135.775</b>	SOUTH BEND APP CON * <b>132.05 257.8</b>	UNICOM <b>122.8 (CTAF)</b>
------------------------------	---	-------------------------------



CATEGORY	A	B	C	D
LPV DA	995-1 287 (300-1)			NA
LNAV/VNAV DA	1132-1½ 424 (500-1½)			NA
LNAV MDA	1120-1	412 (500-1)	1120-1⅛ 412 (500-1⅛)	NA
CIRCLING	1240-1	532 (600-1)	1480-2¼ 772 (800-2¼)	NA

ELEV 708	TDZE 708
----------	----------

The diagram shows a scale bar from 0 to 27. Below the scale bar is a diagram of the runway, showing the 4201 x 75 dimensions and the 27° heading. The diagram also shows the 093° heading for the approach.

MIRL Rwy 9-27 **1**  
REIL Rws 9 and 27 **1**

EC-2, 14 MAY 2026 to 11 JUN 2026

EC-2, 14 MAY 2026 to 11 JUN 2026