

WAAS CH 93707 W13A	APP CRS 130°	Rwy Ldg TDZE 2503 Apt Elev 2503
--	------------------------	---

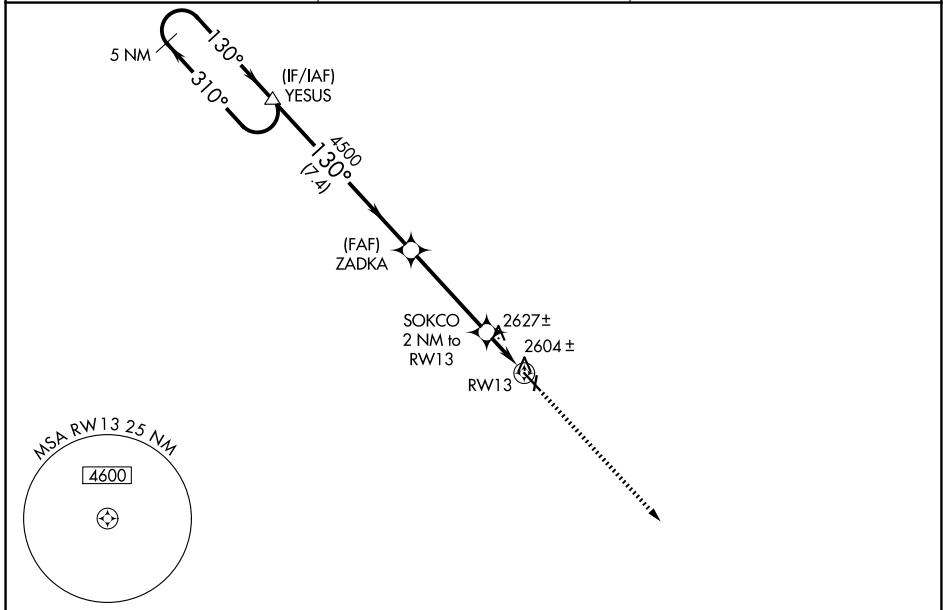
RNAV (GPS) RWY 13

COZAD MUNI (CZD)

⚠ NA Circling NA to Rwy 18 and 36. Baro-VNAV NA. DME/DME RNP-0.3 NA.
 Use Lexington altimeter setting; when not received, use North Platte altimeter setting and increase all DAs 79 feet and LPV and LNAV/VNAV visibility ¼ mile all Cats, increase all MDAs 80 feet and Circling Cat C visibility ¼ mile. Helicopter visibility reduction below ¾ SM NA.

MISSED APPROACH: Climb to 5500 direct TOKKU and hold.

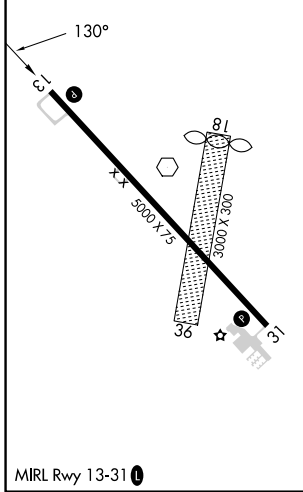
LXN AWOS-3 121.025	DENVER CENTER 132.7 226.675	UNICOM 122.8 (CTAF) ①
------------------------------	---------------------------------------	---------------------------------



NC-2, 14 MAY 2026 to 11 JUN 2026

NC-2, 14 MAY 2026 to 11 JUN 2026

ELEV 2503	TDZE 2503
------------------	------------------



5 NM Holding Pattern YESUS		ZADKA		SOKCO 2 NM to RW13		RW13		5500 TOKKU *LNAV only.		
5000 ← 310°		→ 130°		4500		*3180				
GP 3.00° TCH 52		7.4 NM		4 NM		2 NM				
CATEGORY	A	B	C	D						
LPV DA	2875-1¼		372 (400-1¼)		NA					
LNAV/VNAV DA	2913-1½		410 (500-1½)		NA					
LNAV MDA	2920-1		417 (500-1)		2920-1¼		417 (500-1¼)		NA	
CIRCLING	3080-1		577 (600-1)		3140-1¾		637 (700-1¾)		NA	