

WAAS CH <b>62812</b> <b>W17A</b>	APP CRS <b>170°</b>	Rwy Idg <b>4400</b> TDZE <b>769</b> Apt Elev <b>769</b>
--	------------------------	---

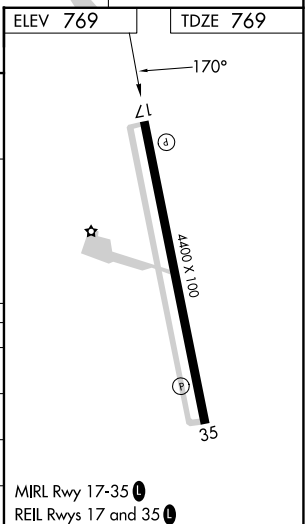
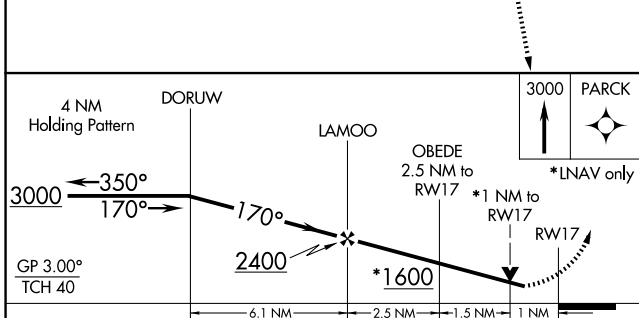
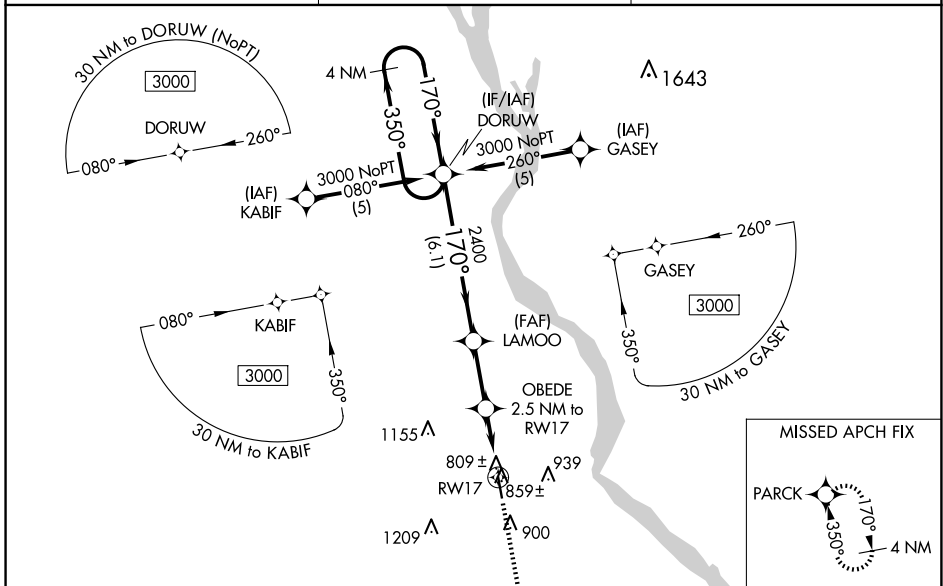
# RNAV (GPS) RWY 17

HANNIBAL RGNL (H.A.E.)

**▽** For uncompensated Baro-VNAV systems, LNAV/VNAV NA below -16°C (4°F) or above 54°C (130°F). DME/DME RNP-0.3 NA. Visibility reduction by helicopters NA. When local altimeter setting not received, use Quincy altimeter setting; increase all DA 41 feet, all MDA 60 feet, increase LNAV Cat C visibility ¼ SM and Circling Cat C visibility ¼ SM. Baro-VNAV and VDP NA when using Quincy altimeter setting.

**▲ NA** MISSED APPROACH: Climb to 3000 direct PARCK and hold.

AWOS-3PT <b>120.775</b>	KANSAS CITY CENTER <b>126.225 317.775</b>	UNICOM <b>122.8(CTAF) 0</b>
----------------------------	--	--------------------------------



CATEGORY	A	B	C	D
LPV DA	1019-1	250 (300-1)		NA
LNAV/VNAV DA	1079-1¼	310 (400-1¼)		NA
LNAV MDA	1120-1	351 (400-1)		NA
CIRCLING	1260-1	491 (500-1)	1640-2½ 871 (900-2½)	NA

NC-3, 14 MAY 2026 to 11 JUN 2026

NC-3, 14 MAY 2026 to 11 JUN 2026