

WAAS CH <b>87034</b> <b>W20A</b>	APP CRS <b>203°</b>	Rwy Ldg TDZE Apt Elev	<b>5000</b> <b>812</b> <b>812</b>
--	------------------------	-----------------------------	---

# RNAV (GPS) RWY 20

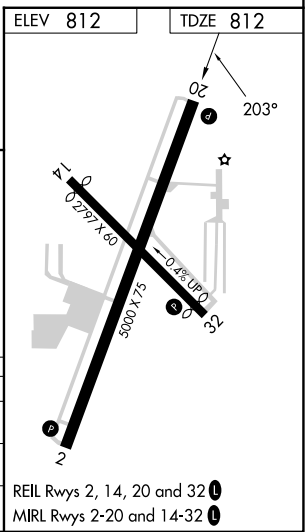
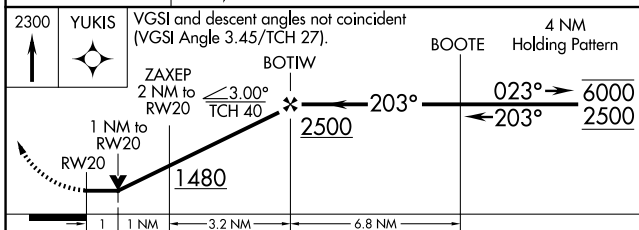
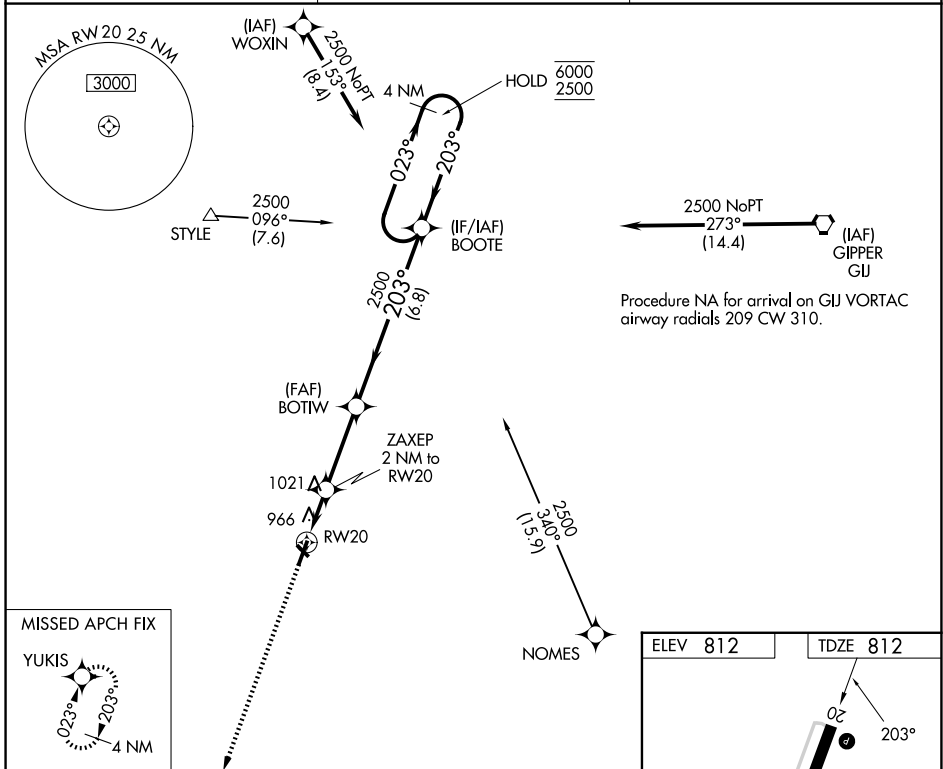
LA PORTE MUNI (PPO)

RNP APCH - GPS.

⚠ Circling Rwy 14, 32 NA at night. Rwy 20 helicopter visibility reduction below 3/4 SM NA. VDP NA when using SBN altimeter setting. When local altimeter setting not received, use SBN altimeter setting: increase all MDA's 60 feet; LNAV visibility Cat C and D 1/2 SM and LP visibility Cat C and D 1/4 SM.

MISSED APPROACH: Climb to 2300 direct YUKIS and hold.

AWOS-3PT <b>119.825</b>	SOUTH BEND APP CON ★ <b>132.05 257.8</b>	UNICOM <b>123.0 (CTAF) 1</b>
----------------------------	---	---------------------------------



CATEGORY	A	B	C	D
LP MDA	1220-1	408 (500-1)	1220-1 1/8	408 (500-1 1/8)
LNAV MDA	1280-1	468 (500-1)	1280-1 3/8	468 (500-1 3/8)
CIRCLING	1320-1	508 (600-1)	1560-2 1/4 748 (800-2 1/4)	1560-2 1/2 748 (800-2 1/2)

EC-2, 14 MAY 2026 to 11 JUN 2026

EC-2, 14 MAY 2026 to 11 JUN 2026