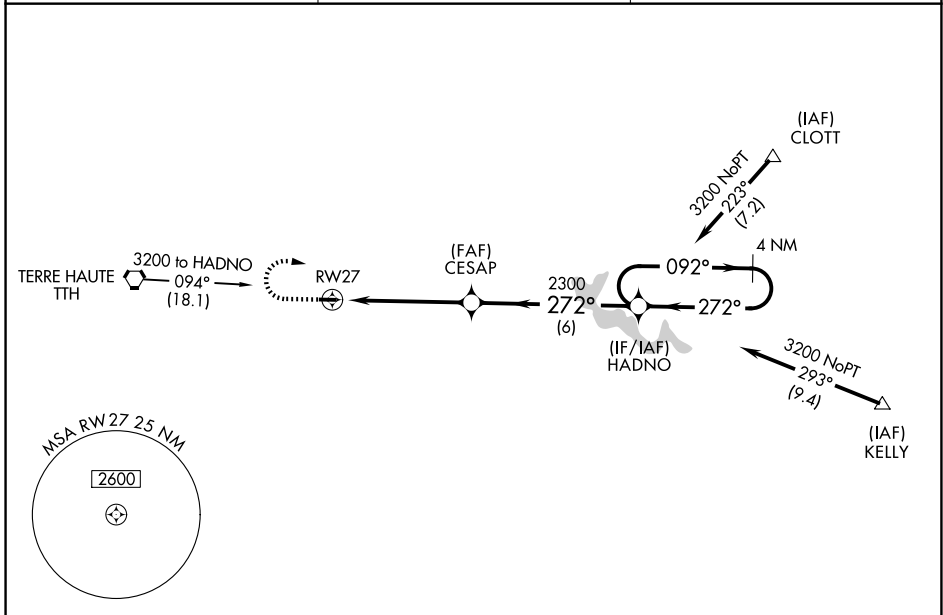


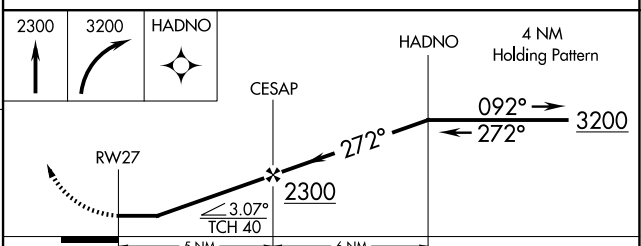
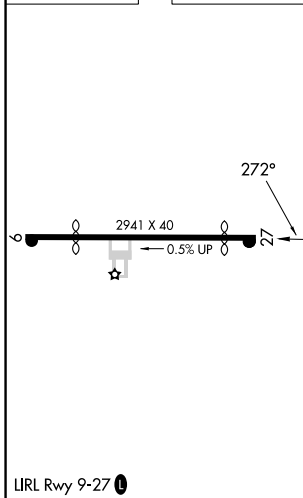
APP CRS 272°	Rwy Ldg TDZE Apt Elev	2499 645 645
------------------------	-----------------------------	---

RNAV (GPS) RWY 27
BRAZIL CLAY COUNTY/CHARLES B HALL FLD (ØI2)

RNP APCH - GPS.		MISSED APPROACH: Climb to 2300 then dimbing right turn to 3200 direct HADNO and hold.	
▼ Use HUF altimeter setting. Procedure NA at night. ▲ NA Helicopter visibility reduction below 1 SM NA.		HUF ASOS 127.5	HULMAN APP CON 125.45 339.8
		UNICOM 122.8 (CTAF) 0	



ELEV 645	TDZE 645
----------	----------



CATEGORY	A	B	C	D
LNAV MDA	1240-1 595 (600-1)		NA	
CIRCLING	1240-1 595 (600-1)		NA	

EC-2, 14 MAY 2026 to 11 JUN 2026

EC-2, 14 MAY 2026 to 11 JUN 2026