

WAAS CH 61233 W29A	APP CRS 289°	Rwy Idg TDZE Apt Elev	3500 1167 1174
--	------------------------	-----------------------------	---

RNAV (GPS) RWY 29

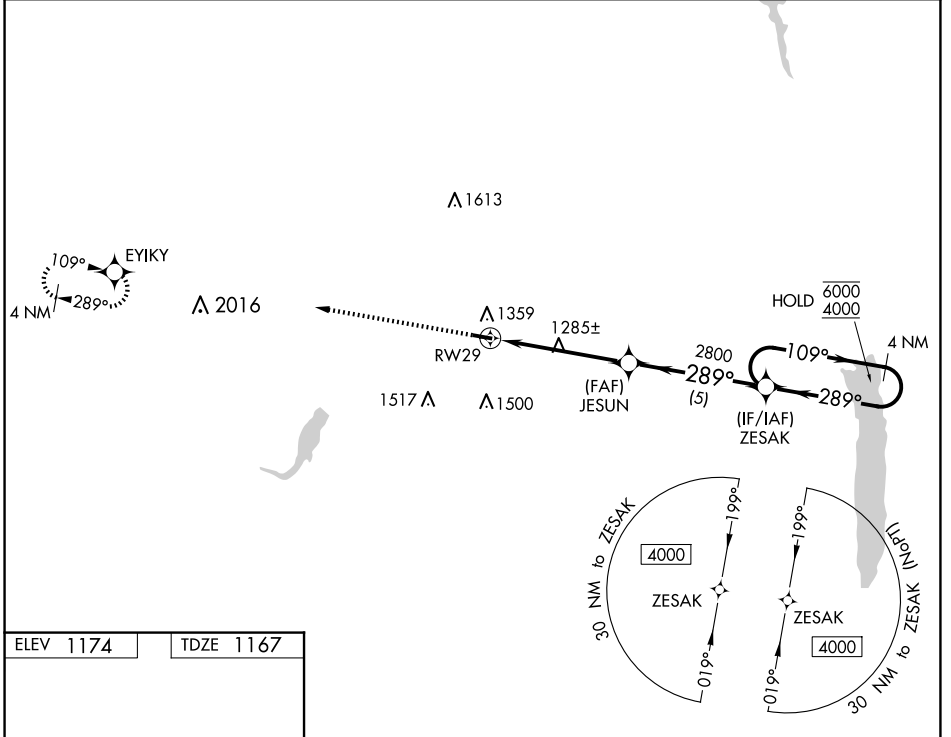
GEAUGA COUNTY (7G8)

RNP APCH - GPS.

NA Circling Rwy 11 NA at night. Rwy 29 helicopter visibility reduction below $\frac{3}{4}$ SM NA. Use Youngstown/Warren altimeter setting; when not received, use Cuyahoga County altimeter setting and increase all MDA's 40 feet and increase Circling Cat C visibility $\frac{1}{4}$ SM.

MISSED APPROACH: Climb to 3100 direct EYIKY and hold.

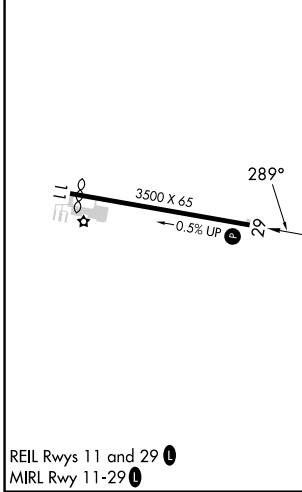
YNG ASOS 123.75	CLEVELAND APP CON 125.35 346.325	UNICOM 123.0 (CTAF)
---------------------------	--	-------------------------------



EC-2, 14 MAY 2026 to 11 JUN 2026

EC-2, 14 MAY 2026 to 11 JUN 2026

ELEV 1174	TDZE 1167
-----------	-----------



3100	EYIKY	Visual Segment - Obstacles.	ZESAK	4 NM Holding Pattern
↑	✦			
		JESUN	2800	109° → 6000 ← 289° 4000

CATEGORY	A	B	C	D
LP MDA	1620-1	453 (500-1)	1620-1 $\frac{3}{8}$ 453 (500-1 $\frac{3}{8}$)	NA
LNAV MDA	1640-1	473 (500-1)	1640-1 $\frac{3}{8}$ 473 (500-1 $\frac{3}{8}$)	NA
C CIRCLING	1760-1	586 (600-1)	1900-2 726 (800-2)	NA

REIL Rwy 11 and 29
MIRL Rwy 11-29