

WAAS CH <b>90506</b> <b>W10A</b>	APP CRS <b>104°</b>	Rwy Ldg TDZE Apt Elev	<b>5800</b> <b>945</b> <b>945</b>
--	------------------------	-----------------------------	---

# RNAV (GPS) RWY 10

DELAWARE MUNI/JIM MOORE FLD (DLZ)

RNP APCH - GPS.

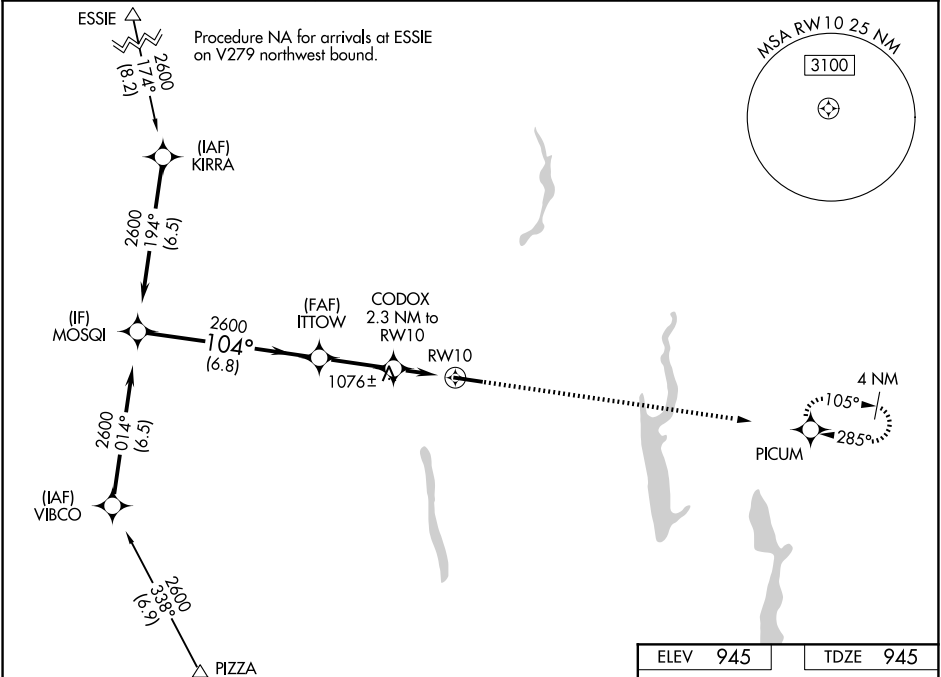
MISSED APPROACH: Climb to 3000 direct PICUM and hold.

For uncompensated Baro-VNAV systems, LNAV/VNAV NA below -16°C or above 54°C.

AWOS-3PT  
**119.025**

COLUMBUS APP CON  
**125.95 317.775**

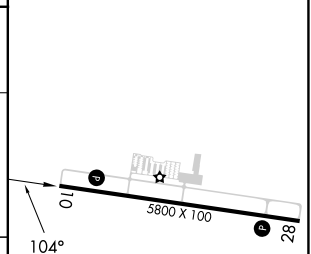
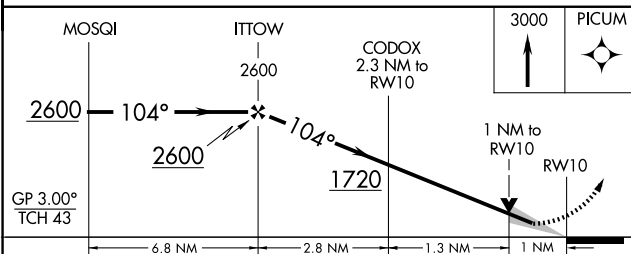
UNICOM  
**122.7 (CTAF)**



EC-2, 14 MAY 2026 to 11 JUN 2026

EC-2, 14 MAY 2026 to 11 JUN 2026

ELEV	945	TDZE	945
------	-----	------	-----



CATEGORY	A	B	C	D
LPV DA		1195-7/8	250 (300-7/8)	
LNAV/VNAV DA		1231-1	286 (300-1)	
LNAV MDA		1340-1	395 (400-1)	
CIRCLING	1420-1	475 (500-1)	1560-1 3/4 615 (700-1 3/4)	1560-2 615 (700-2)

REIL Rwy 10 and 28  
MRL Rwy 10-28