

WAAS CH 50506 W28A	APP CRS 284°	Rwy Ldg TDZE 5800 945 Apt Elev 945
--	------------------------	--

RNAV (GPS) RWY 28
DELAWARE MUNI/JIM MOORE FLD (D/LZ)

RNP APCH.

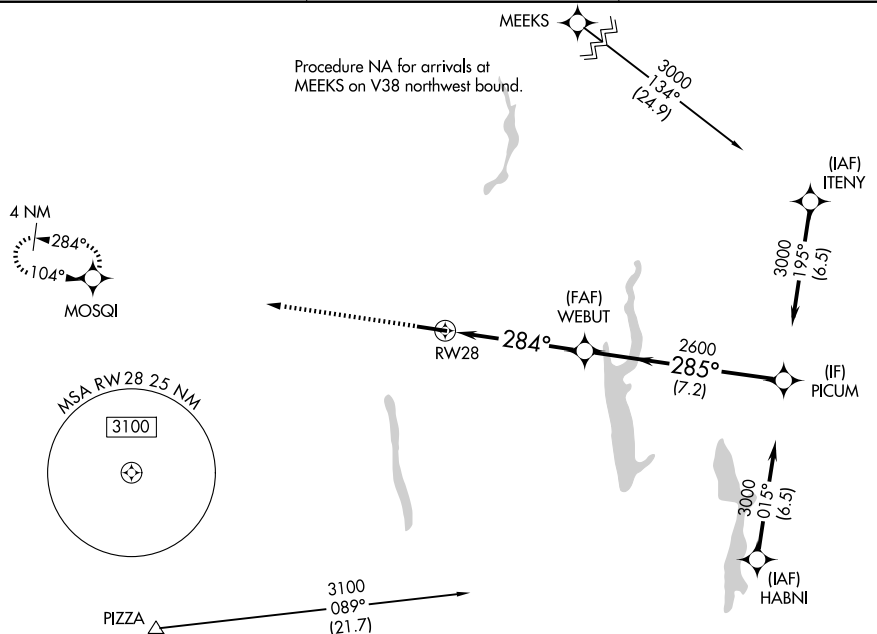
▼ For uncompensated Baro-VNAV systems, LNAV/VNAV NA below -16°C or above 54°C. Rwy 28 helicopter visibility reduction below ¾ SM NA.

MISSED APPROACH: Climb to 2600 direct MOSQI and hold.

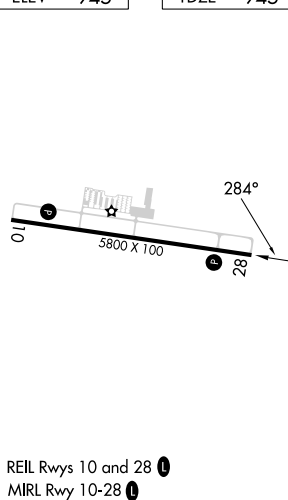
AWOS-3PT
119.025

COLUMBUS APP CON
125.95 317.775

UNICOM
122.7 (CTAF) 0



ELEV 945	TDZE 945
----------	----------



	2600	MOSA QI		PICUM
	↑	✧		
	*LNAV only.			
	RWY 28	WEBUT 2600	PICUM 3000	GP 3.00° TCH 41
	1.4 NM	3.7 NM	7.2 NM	
CATEGORY	A	B	C	D
LPV DA	1195-7/8 250 (300-7/8)			
LNAV/VNAV DA	1406-1 3/4 461 (500-1 3/4)			
LNAV MDA	1420-1	475 (500-1)	1420-1 3/8 475 (500-1 3/8)	
CIRCLING	1420-1	475 (500-1)	1560-1 3/4 615 (700-1 3/4)	1560-2 615 (700-2)

EC-2, 14 MAY 2026 to 11 JUN 2026

EC-2, 14 MAY 2026 to 11 JUN 2026