

VORTAC AEX <b>116.1</b> Chan <b>108</b>	APP CRS <b>110°</b>	Rwy Ldg TDZE Apt Elev <b>N/A</b> <b>N/A</b> <b>79</b>
---	------------------------	--

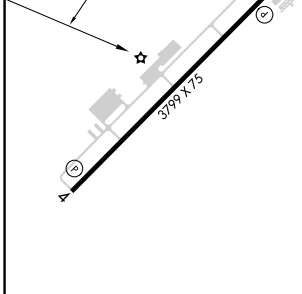
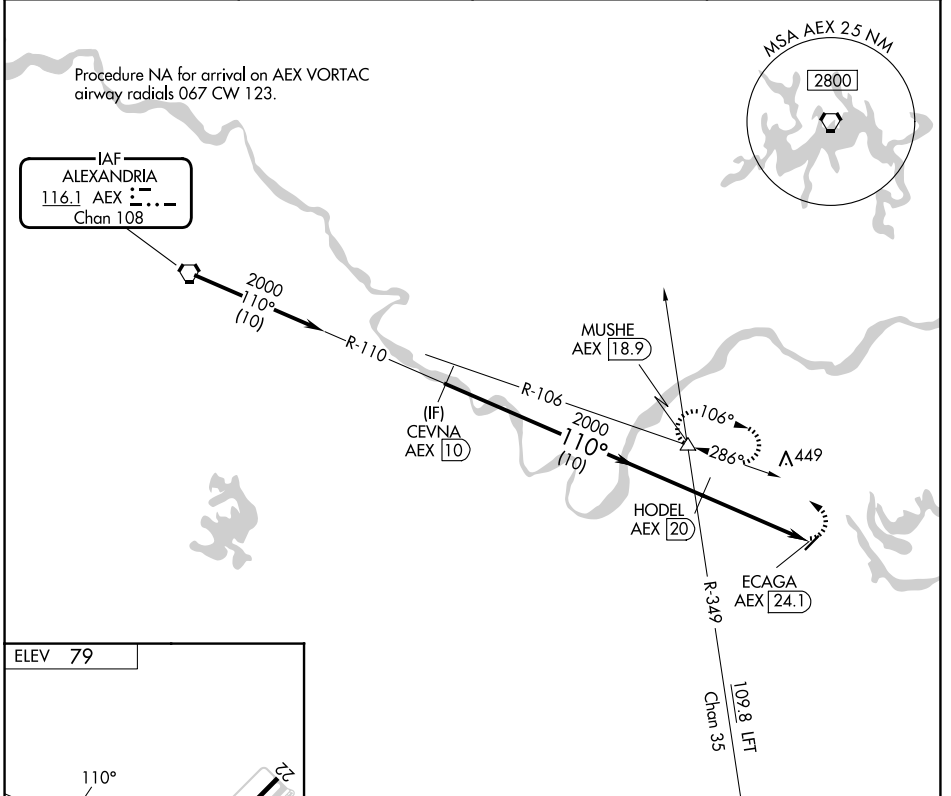
**VOR-A**  
MARKSVILLE MUNI (MKV)

DME required.

**NA** Circling Rwy 22 NA at night. Use Esler Rgnl altimeter setting.  
When not received, use Alexandria Intl altimeter setting.

MISSED APPROACH: Climbing left turn to 4000 on AEX VORTAC R-106 to MUSHE INT/AEX 18.9 DME and hold, continue climb-in-hold to 4000.

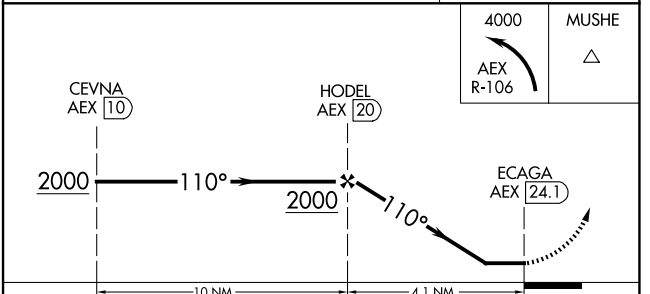
AWOS-3PT <b>124.175</b>	ESF ASOS <b>119.425</b>	MAKS APP CON <b>125.4 302.2</b>	CTAF <b>122.9</b>
----------------------------	----------------------------	------------------------------------	----------------------



ELEV 79

MIRL Rwy 4-22

REIL Rwys 4 and 22



CATEGORY	A	B	C	D
CIRCLING	760-1 681 (700-1)	820-1¼ 741 (800-1¼)	NA	

SC-4, 14 MAY 2026 to 11 JUN 2026

SC-4, 14 MAY 2026 to 11 JUN 2026