

APP CRS **087°**
 Rwy Idg **3002**
 TDZE **146**
 Apt Elev **146**

RNAV (GPS) RWY 9

DAVID G JOYCE (ØR5)

RNP APCH - GPS.

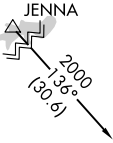
⚠ Procedure NA at night. Rwy 9 helicopter visibility reduction below 1 SM NA. Use Alexandria Intl altimeter setting, when not received use Esler Rgnl altimeter setting.

MISSED APPROACH: Climb to 2000 direct XOVVOY and hold.

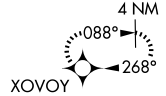
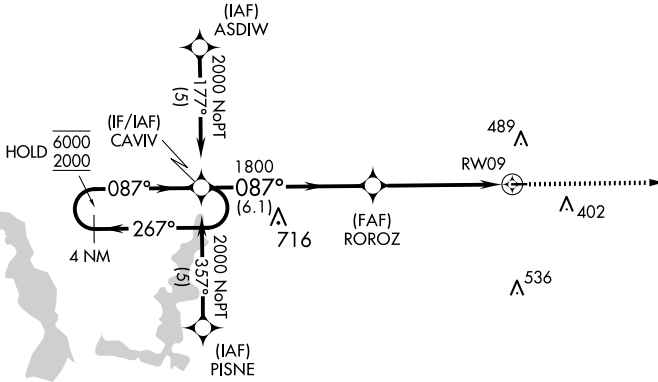
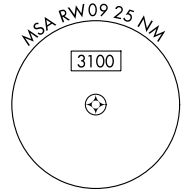
AEX ASOS
123.975

POLK APP CON
125.4 302.2

UNICOM
122.7 (CTAF) 0

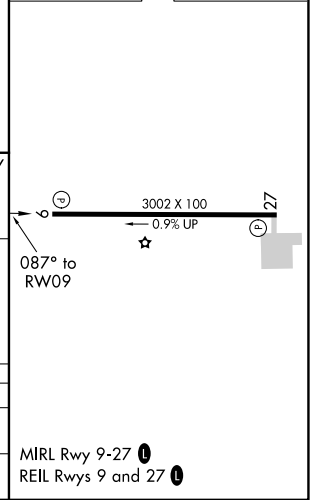
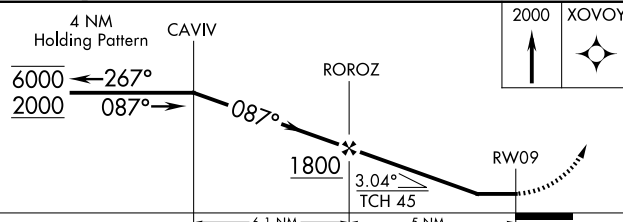


Procedure NA for arrivals at JENNA on V94 westbound.



Procedure NA for arrivals at NUBOY on V114-566 southeast bound.

ELEV **146** | TDZE **146**



CATEGORY	A	B	C	D
LNAV MDA	780-1	634 (700-1)		NA
C CIRCLING	780-1 634 (700-1)	900-1 754 (800-1)		NA

MIRL Rwy 9-27 **0**
 REIL Rwy 9 and 27 **0**

SC-4, 14 MAY 2026 to 11 JUN 2026

SC-4, 14 MAY 2026 to 11 JUN 2026