

APP CRS	Rwy Ldg	3397
250°	TDZE	70
	Apt Elev	70

RNAV (GPS) RWY 25

WISCASSET (IWI)

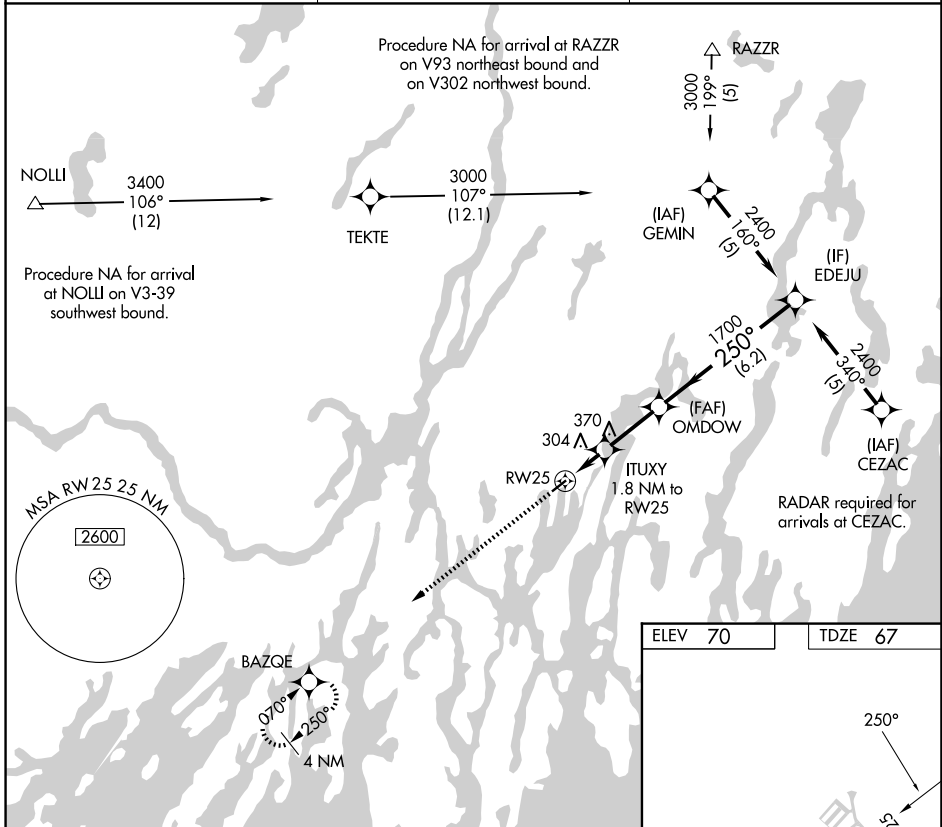
RNP APCH.

Procedure NA at night. Rwy 25 helicopter visibility reduction below 1 SM NA. When local altimeter setting not received use Rockland altimeter setting and increase all MDA 80 feet.

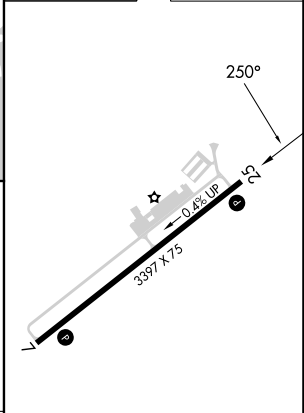
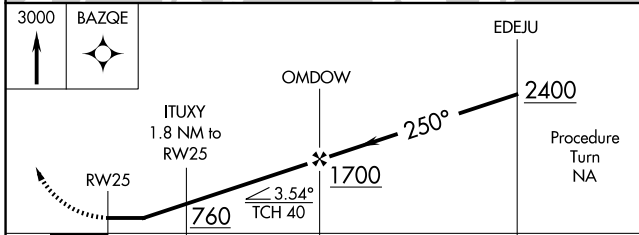
MISSED APPROACH: Climb to 3000 direct BAZQE and hold.

ASOS	PORTLAND APP CON★
135.725	119.75 269.35 (112°-292°)
	120.4 299.2 (293°-111°)

UNICOM
122.8 (CTAF)



ELEV 70	TDZE 67
---------	---------



CATEGORY	A	B	C	D
LNNAV MDA	580-1	513 (600-1)	NA	

MIRL Rwy 7-25	1
REIL Rwy 7	1
REIL Rwy 25	1

NE-1, 14 MAY 2026 to 11 JUN 2026

NE-1, 14 MAY 2026 to 11 JUN 2026