

|             |          |             |
|-------------|----------|-------------|
| APP CRS     | Rwy Ldg  | <b>3795</b> |
| <b>097°</b> | TDZE     | <b>881</b>  |
|             | Apt Elev | <b>895</b>  |

# RNAV (GPS) RWY 10

MARLETTE TOWNSHIP (77G)

RNP APCH - GPS.

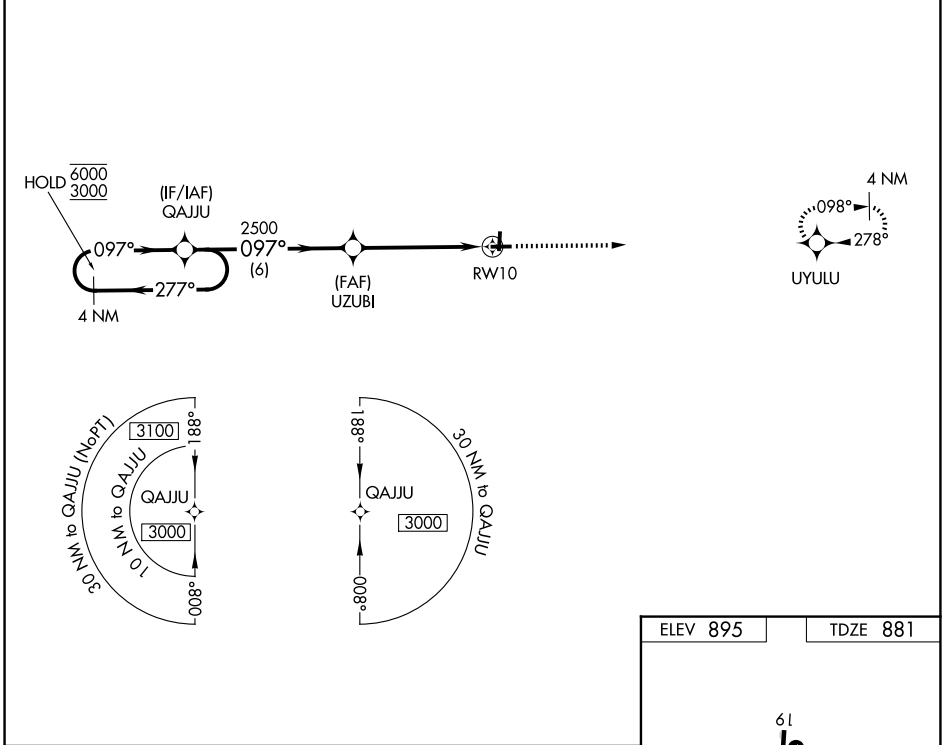
**⚠** Rwy 10 helicopter visibility reduction below 1 SM NA. Straight-in Rwy 10 NA at night, Circling Rwy 10, 19 NA at night. Use Caro altimeter setting, when not received, use Bad Axe altimeter setting and increase all MDAs 20 feet and LNAV visibility Cat C/D ½ SM.

**MISSED APPROACH:**  
Climb to 2700 direct UYULU and hold.

CFS AWOS-3P  
**119.275**

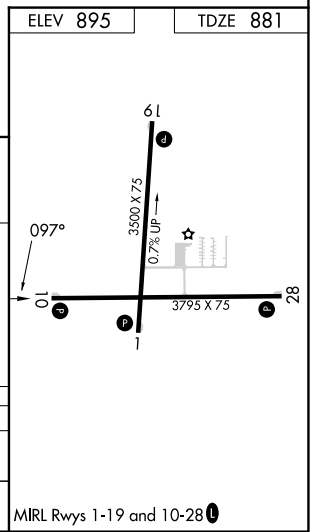
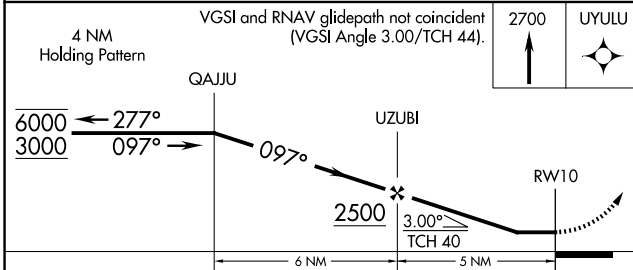
CLEVELAND CENTER  
**127.7 290.425**

UNICOM  
**122.8 (CTAF) 0**



EC-1, 14 MAY 2026 to 11 JUN 2026

EC-1, 14 MAY 2026 to 11 JUN 2026



| CATEGORY | A      | B           | C       | D                     |
|----------|--------|-------------|---------|-----------------------|
| LNAV MDA | 1420-1 | 539 (600-1) | 1420-1½ | 539 (600-1½)          |
| CIRCLING | 1460-1 | 565 (600-1) | 1460-1½ | 1560-2<br>665 (700-2) |

MIRL Rwy 1-19 and 10-28 0