

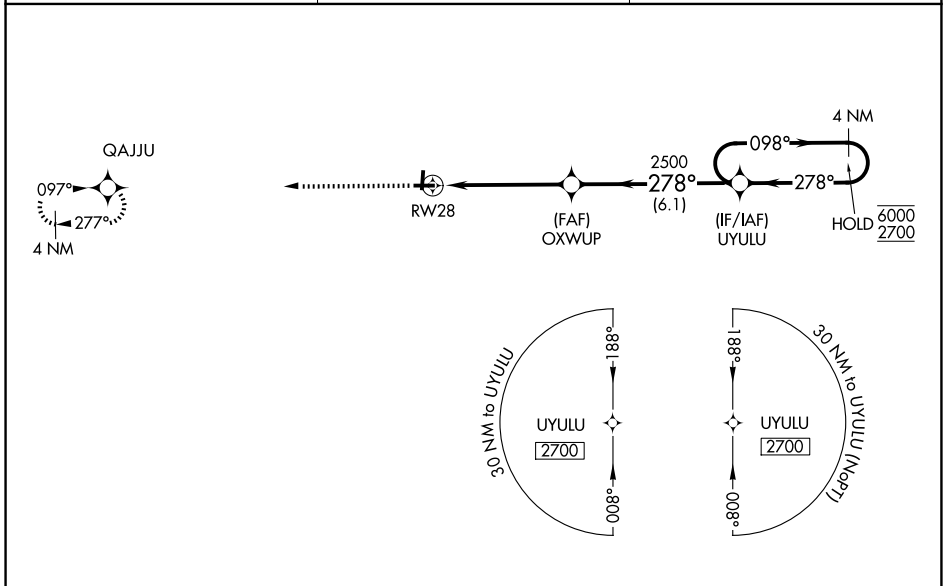
WAAS CH <b>62944</b> <b>W28A</b>	APP CRS <b>278°</b>	Rwy Ldg TDZE <b>881</b> Apt Elev <b>895</b>
--	------------------------	---

# RNAV (GPS) RWY 28

MARLETTE TOWNSHIP (77G)

RNP APCH - GPS.	<p>▼ Rwy 28 helicopter visibility reduction below 3/4 SM NA. Baro-VNAV NA.                  ▲ NA Use Caro altimeter setting, when not received, use Bad Axe altimeter setting and increase LPV DA to 1216 feet; increase LNAV/VNAV DA to 1279 feet; increase all MDAs 20 feet and Circling visibility Cat D 1/4 SM. Circling Rwy 10, 19 NA at night.</p>	MISSED APPROACH: Climb to 3000 direct QAJJU and hold.
-----------------	--	--

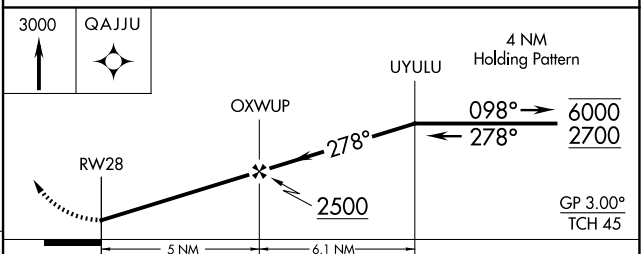
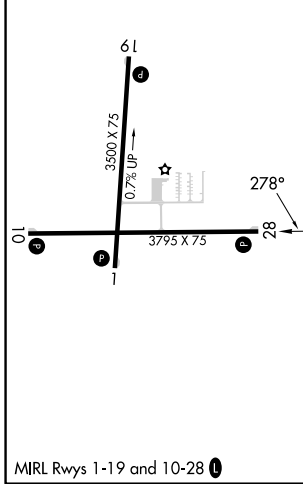
CFS AWOS-3P <b>119.275</b>	CLEVELAND CENTER <b>127.7 290.425</b>	UNICOM <b>122.8 (CTAF) 0</b>
-------------------------------	--	---------------------------------



EC-1, 14 MAY 2026 to 11 JUN 2026

EC-1, 14 MAY 2026 to 11 JUN 2026

ELEV 895	TDZE 881
----------	----------



CATEGORY	A	B	C	D
LPV DA		1199-1	318 (400-1)	
LNAV/VNAV DA		1262-1 1/8	381 (400-1 1/8)	
LNAV MDA	1340-1	459 (500-1)	1340-1 3/8	459 (500-1 3/8)
CIRCLING	1420-1	525 (600-1)	1420-1 1/2 525 (600-1 1/2)	1560-2 665 (700-2)