

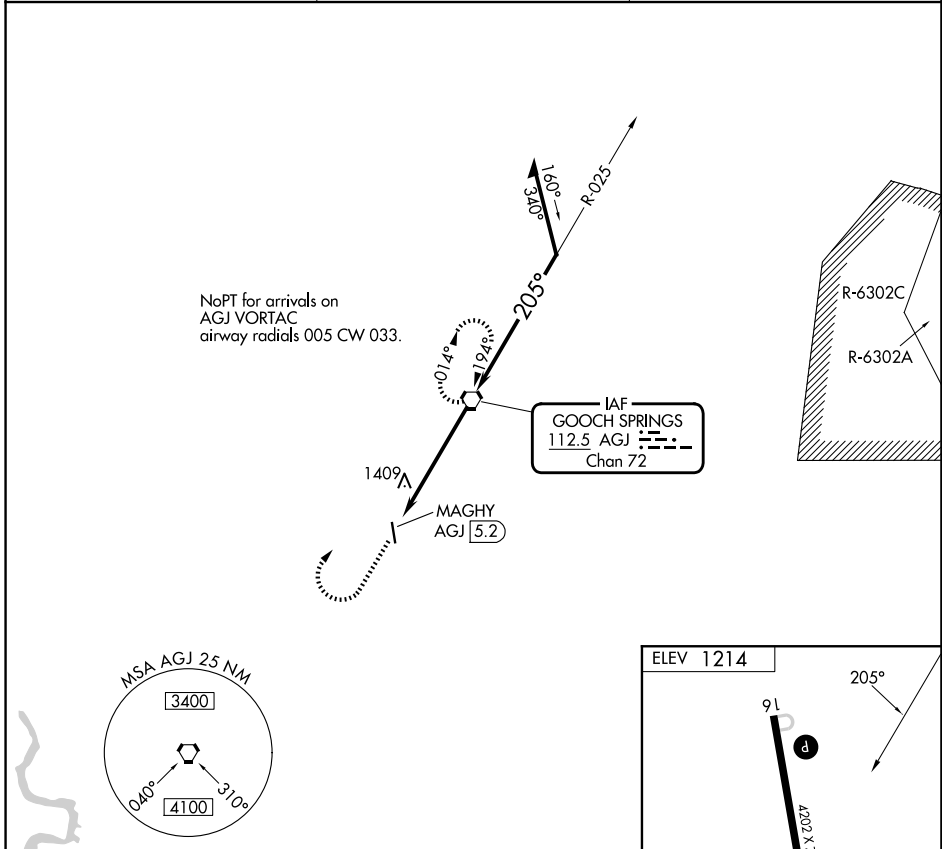
VORTAC AGJ 112.5 Chan 72	APP CRS 205°	Rwy Ldg TDZE Apt Elev 1214	N/A N/A
---------------------------------------	------------------------	---	--------------------------

VOR-A
LAMPASAS (LZZ)

⚠ When local altimeter setting not received, use Robert Gray AAF altimeter setting and increase all MDAs 80 feet and visibility Cat C ½ SM. Circling Rwy 16 NA at night. Rwy 16 helicopter visibility reduction below 1 SM NA.

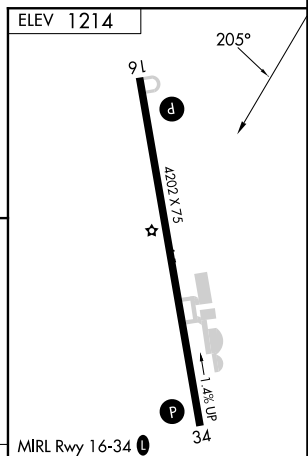
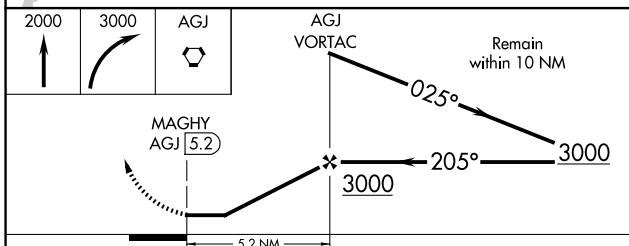
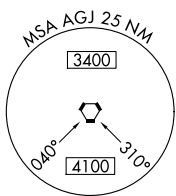
MISSED APPROACH: Climb to 2000 then climbing right turn to 3000 direct AGJ VORTAC and hold.

AWOS-3 119.075	GRAY APP CON 120.075 323.15	UNICOM 122.8 (CTAF) 📻
--------------------------	---------------------------------------	--



SC-3, 14 MAY 2026 to 11 JUN 2026

SC-3, 14 MAY 2026 to 11 JUN 2026



CATEGORY	A	B	C	D	FAF to MAP 5.2 NM					
CIRCLING	1680-1 466 (500-1)	1880-1 666 (700-1)	1880-1¼ 666 (700-1¼)	NA	Knots	60	90	120	150	180
					Min:Sec	5:12	3:28	2:36	2:05	1:44