

WAAS CH <b>86316</b> <b>W16A</b>	APP CRS <b>165°</b>	Rwy Idg TDZE Apt Elev	<b>6003</b> <b>318</b> <b>318</b>
--	------------------------	-----------------------------	---

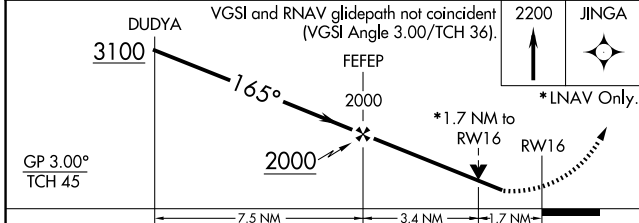
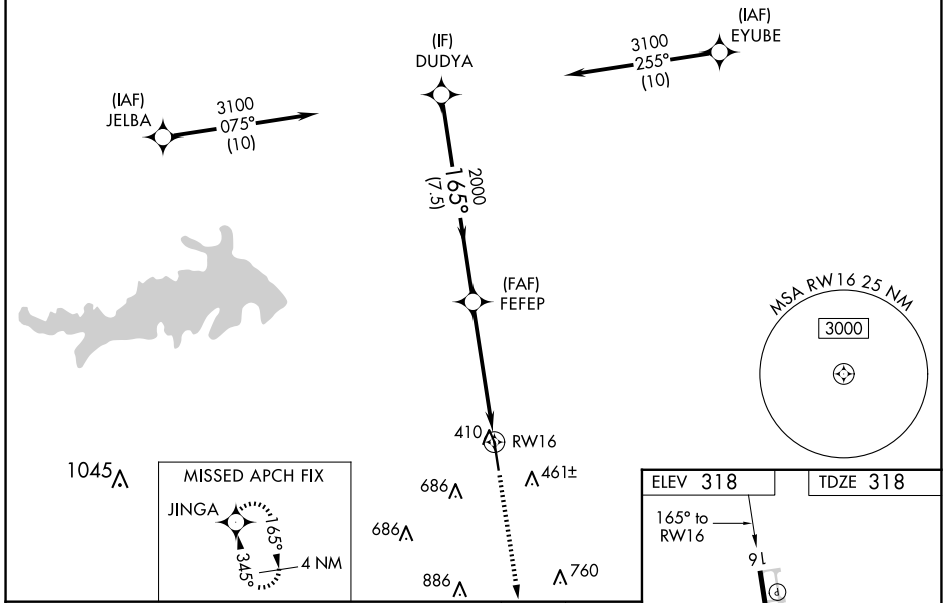
# RNAV (GPS) RWY 16

BRENHAM MUNI (11R)

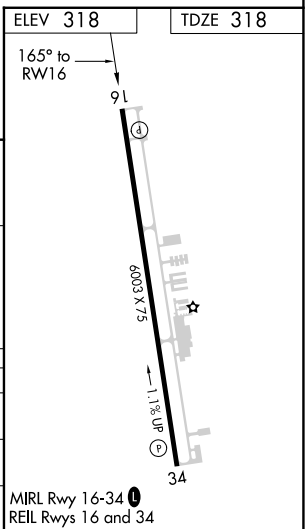
RNP APCH.	<p><b>MISSED APPROACH:</b> Climb to 2200 direct JINGA and hold.</p>
<p><b>▽</b> Rwy 16 helicopter visibility reduction below 3/4 SM NA. For uncompensated Baro-VNAV systems, LNAV/VNAV NA below -15°C or above 37°C. When local altimeter setting not received, use College Station altimeter setting and increase all DA 52 feet, and all MDA 60 feet, increase LPV and LNAV/VNAV all Cats and LNAV Cats C/D visibility 1/4 SM. VDP and Baro-VNAV NA with College Station altimeter setting.</p>	

AWOS-3 <b>121.125</b>	HOUSTON APP CON <b>134.3 360.85</b>	UNICOM <b>123.075 (CTAF) ①</b>
--------------------------	--	-----------------------------------

## RADAR REQUIRED



CATEGORY	A	B	C	D
LPV DA	594-7/8		276 (300-7/8)	
LNAV/VNAV DA	680-1 1/4		362 (400-1 1/4)	
LNAV MDA	880-1	562 (600-1)	880-1 1/8	562 (600-1 1/8)



SC-5, 14 MAY 2026 to 11 JUN 2026

SC-5, 14 MAY 2026 to 11 JUN 2026