

WAAS CH 82133 W13A	APP CRS 127°	Rwy Idg 5003 TDZE 598 Apt Elev 598
--	------------------------	---

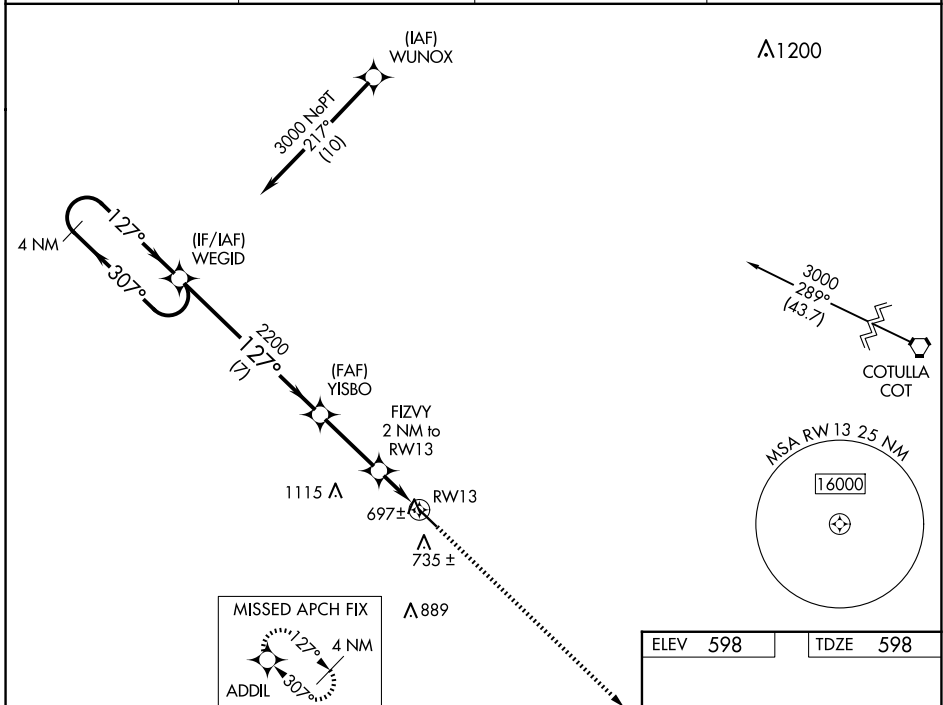
RNAV (GPS) RWY 13

DIMITT COUNTY (CZT)

Baro-VNAV NA. DME/DME RNP-0.3 NA. Use Cotulla altimeter setting; when not received use Uvalde altimeter setting and increase all DA 52 feet, all MDA 60 feet and increase LPV all Cats, LNAV/VNAV all Cats, and Circling Cat C visibility 1/4 mile. Helicopter visibility reduction below 3/4 SM NA.

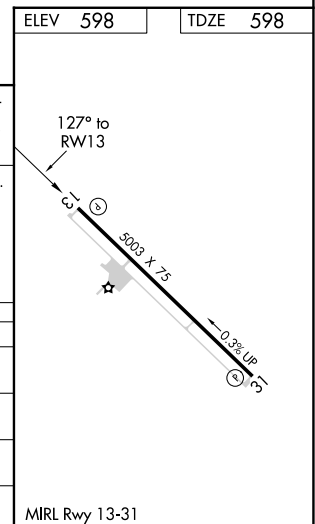
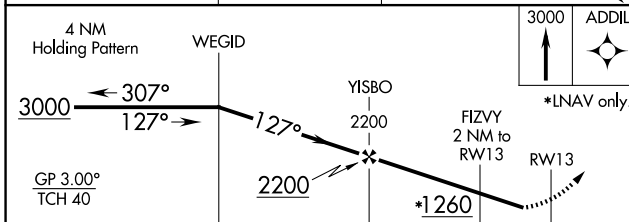
MISSED APPROACH: Climb to 3000 direct ADDIL and hold.

AWOS-3 119.625	COT ASOS 118.325	HOUSTON CENTER 127.8 307.2	UNICOM 122.8 (CTAF)
--------------------------	----------------------------	--------------------------------------	-------------------------------



SC-3, 14 MAY 2026 to 11 JUN 2026

SC-3, 14 MAY 2026 to 11 JUN 2026



CATEGORY	A	B	C	D
LPV DA	940-1 1/8	342 (400-1 1/8)		NA
LNAV/VNAV DA	940-1 1/8	342 (400-1 1/8)		NA
LNAV MDA	1040-1	442 (500-1)	1040-1 1/8 442 (500-1 3/8)	NA
CIRCLING	1160-1 562 (600-1)	1240-1 642 (700-1)	1500-2 3/4 902 (1000-2 3/4)	NA

MIRL Rwy 13-31